

2022 local annual achievement report

Central Tablelands region

In 2022 Central Tablelands once again faced both rewards and challenges for producers and communities across our region. From the relief of improved seasonal conditions and recovery after drought, to the disaster and disruption of above average rainfall and flooding. Throughout this, our staff continued to find relevant and valuable ways to adapt our services to support our landholders to achieve some remarkable outcomes for primary production, the natural environment and our communities.

Our Board continues to drive our strategic priorities at our regional level and through to the state Board. Our business planning saw us collaborate with key stakeholders and partners to better understand their insights and needs, to help us shape our focus areas for service delivery in line with our local strategic plan. This valuable process helped ensure that the on-ground services we deliver are meaningful and effective.

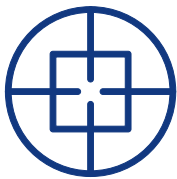
I would like to take this opportunity to thank both the staff and all our landholders and community for all their hard work with us throughout the year. This annual achievements report highlights some of the fantastic things we can achieve when we work together.



Ian Rogan

Chair

Central Tablelands Local Land Services



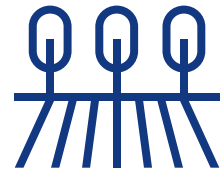
1,374,239 ha

of pest animal control



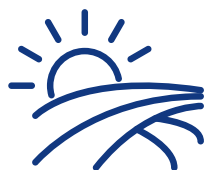
558 ha

of weed management



1,372 ha

of land improved for agricultural production



1,772 ha

of travelling stock reserves actively managed



854 ha

of threatened species, populations, or ecological communities enhanced, rehabilitated or protected

Preparing farmers for changes, challenges and opportunities

Our FARM project continued work with farmers and agricultural industry partners to grow producer awareness of climate and market risks and improve knowledge for practice change.

Throughout 2022 numerous knowledge sharing and training events were held with farmer peer learning and champion groups covering topics from property planning, introduction to soil moisture probe networks and how to use the information to seasonal pasture forecasts, soil management and livestock market information and forecasts.

Farmers reported positive benefits from participating in the program during our mid-term program evaluation. With an increase to their personal knowledge base, many of the farmers said they have been able to implement changes in their farming practices to better manage their land and enterprises for climate and market changes, challenges and opportunities.

The FARM project is being delivered by Central Tablelands Local Land Services through funding from the Australian Governments National Landcare Program.



680

animal disease surveillance investigations



3,651

1:1 landholder advice consultations



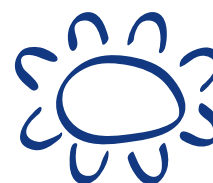
2,105

participants at awareness raising/capacity building events



63

community groups supported



103

participants at Aboriginal training events