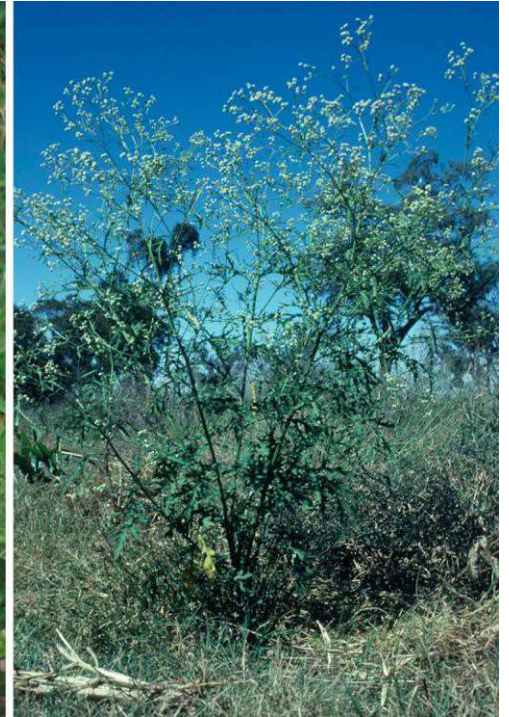


Seen this plant? Parthenium weed

Parthenium hysterophorus



How does this weed affect us?

Parthenium weed invades pastures and crops. It causes severe human health problems including:

- respiratory problems
- severe dermatitis.

It can also cause health problems in livestock.

Parthenium weed:

- is unpalatable to livestock
- outcompetes pastures
- can taint meat or milk
- reduces crop yields
- contaminates grain
- is a host plant for crop viruses.

Seen it? Call us:

1800 680 244

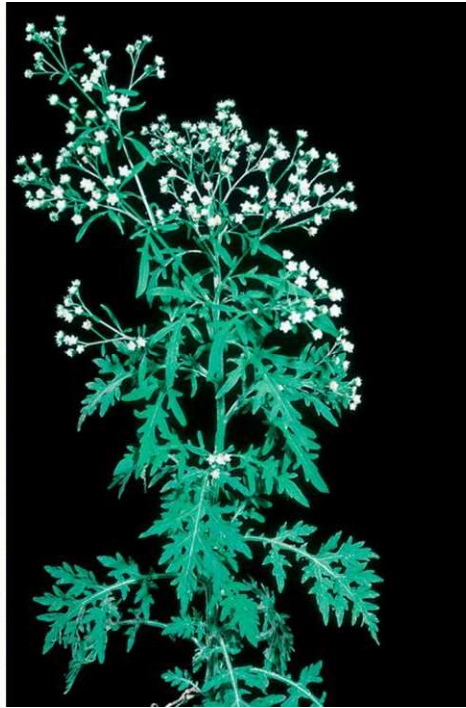
Help protect our farms and grazing lands.

For control and biosecurity information visit NSW WeedWise:

weeds.dpi.nsw.gov.au/weeds/partheniumweed



NORTH WEST
**No Space for
Weeeeds**



Where are you likely to find it?

Parthenium weed has recently been found near Walgett, Forbes, Narrabri and Engadine. It may also have spread into other locations in NSW.

Look for it along roadsides, especially those that have regular traffic from Queensland such as the Newell Highway.

Check areas where grain and hay have been fed to livestock, especially if it may have come from Queensland.

Check regularly and especially after rain.

What does it look like?

It usually grows up to 1.5 m tall but can be up to 2 m tall.

Leaves are pale green and covered in soft fine hairs. Lower leaves are 5–20 cm long and deeply divided. Upper leaves are smaller and less divided.

Flowers are creamy white, 4–6 mm across and star-like with 5 distinct corners. Flower clusters are delicate and look a bit like "baby's breath".

Stems are grooved, woody when older, and have many branches when flowering.

Seen it? Call us:

**NSW Biosecurity Helpline:
1800 680 244**

Help protect our farms and grazing lands.

For control and biosecurity information visit NSW WeedWise:

weeds.dpi.nsw.gov.au/weeds/partheniumweed

