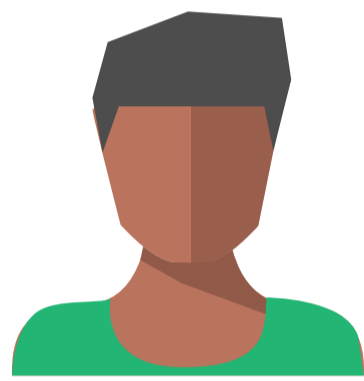


LLS COVID-19 STAFF CHECK IN

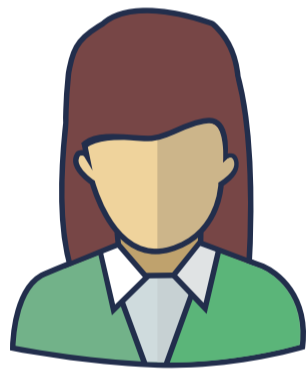


KEY RESULTS



72% staff completion

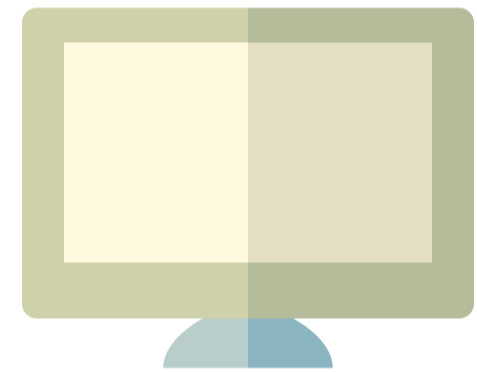
from 14 business units



86%
WELLBEING

Wellbeing reflects the emotional wellness of staff, their level of stress and sense of safety.

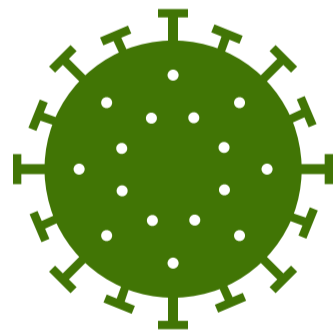
Progress reflects staff perceptions about organisational performance and continuity in responding to the situation.



93%
PROGRESS



96%
Communication



93%
Health and Safety



92%
Resources



89%
Involvement



86%
Work/Life Balance



94%
Senior Management



93%
Supervision



89%
Collaboration