

North West Local Land Services

Quarterly Highlights

JAN - MAR 2020

AG EXTENSION



73

CUSTOMER
ENGAGEMENT



340

GROUP EVENT
ATTENDANCE

KEY ADVISORY TOPICS - WEED IDENTIFICATION AND CONTROL, RESTOCKING OPTIONS, PASTURE MANAGEMENT AFTER RAIN, LIVESTOCK ADVICE FOR TRANSITIONING FROM CONFINEMENT FEEDING

BASED ON THE DPI COMBINED DROUGHT INDICATOR (CDI) THERE WAS A REDUCTION IN THE AREA CATEGORISED AS INTENSE DROUGHT FROM 100% TO 4% AFTER RECENT RAINS. THE REMAINDER OF THE REGION IS CATEGORISED AS DROUGHT (18.5%) AND DROUGHT EFFECTED (77.5%)

* The CDI shows that soil moisture and plant growth indicators are responding although further rain is needed

NATURAL RESOURCE MANAGEMENT



30

ADVICE
PROVIDED



13

ON FARM
VISITS
RELATED TO LAND &
EROSION MANAGEMENT

10 LANDHOLDERS SUPPORTED THROUGH FUNDING FROM THE AUSTRALIAN GOVERNMENT'S NATIONAL LANDSCAPE PROGRAM AND CATCHMENT ACTION NSW TARGETING WORKS OVER 725HA

WORKS CONTRIBUTING TO LAND USE CHANGE AND THE IMPROVED CONDITION OF REGENT HONEYEATER HABITAT AND BRIGALOW VEGETATION COMMUNITIES

SAMPLING UNDERTAKEN FOR THE BENEFICIAL INSECTS IN BRIGALOW PROJECT REINFORCED THE IMPORTANCE OF NATIVE VEGETATION IN THE LANDSCAPE

RECENT RAINS HAVE CREATED OPPORTUNE CONDITIONS FOR:

- RE-VEGETATION PROJECTS TO RECOMMENCE PLANTING
- WATER HYACINTH CONTROL MEASURES IN WETLANDS
- HARRISIA CACTUS MANAGEMENT ON PRIVATE LAND AND TSRS IN BRIGALOW AND ASSOCIATED VEGETATION



ABORIGINAL CULTURAL HERITAGE



5

ABORIGINAL
ORGANISATIONS
ENGAGEMENT

MOREE, WALHALLOW AND TAMWORTH AND STAFF CULTURAL AWARENESS TRAINING

DUE TO COVID-19 AND OUR CONCERNS PARTICULARLY FOR OUR ELDERS, EVENTS HAVE BEEN POSTPONED. FUTURE EVENTS WILL INCLUDE - BACK ON GAMILAROI AT WALGETT, KNOWLEDGE SHARING AT

LAND MANAGEMENT



NATIVE VEGETATION CLEARING ADVICE

194 ENQUIRIES 44 PROPERTY VISITS

CURRENTLY MANAGING A LARGE CASELOAD - STAFF FROM ADJOINING REGIONS ARE ASSISTING WITH CLEARING PROPOSALS

UPCOMING EVENTS

DUE TO COVID-19 HEALTH & SAFETY PRECAUTIONS NORTH WEST LLS CANCELLED SEVERAL PLANNED EVENTS INCLUDING OUR AUTUMN SEASONAL UPDATES. HOWEVER, WE ARE CURRENTLY WORKING ON INNOVATIVE NEW WAYS TO ENGAGE AND CONNECT WITH THE COMMUNITY

YOU CAN MAKE AN APPOINTMENT TO MEET WITH OUR STAFF BY CALLING 1300 795 299

WE ARE CREATING VIDEOS, SCHEDULING WEBINARS AND ARRANGING KEY STAFF TO BE AVAILABLE FOR LIVE ONLINE Q&A SESSIONS. CONNECT WITH US TO STAY UPDATED

www.lls.nsw.gov.au/regions/north-west

www.facebook.com/northwestlocalandservices

www.instagram.com/north.west.lls

www.youtube.com/channel/UCW8S8HjD87BYh6RJ5Z2eRGw/videos

Subscribe to our newsletter online @ <http://eepurl.com/bvVYif>

CUSTOMER SERVICE

The team
have...

IN THE LAST
3
MONTHS



1287

SPOKE TO

444



WALK IN
CUSTOMERS

PROCESSED

1,351



NOTICE OF
SALES

COMPLETED

231



LAND
TRANSFERS

COMMUNITY ENGAGEMENT



LEAD

4

EVENTS

PARTNERED

1

EVENTS

PARTICIPATED IN

4

OTHER EVENTS

EVENTS COVERED PASTURE & ANIMAL HEALTH WORKSHOPS, PEST TRAINING AND DEMONSTRATION DAYS



105

NEW FOLLOWERS
ON FACEBOOK

101,964

VIEWS OF NWLLS
FACEBOOK POSTS



79 POSTS, LINKS & VIDEOS POSTED

TOP VIDEO POST VIEWED 3,722 TIMES

TRAVELLING STOCK ROUTES

12,577

HEAD OF CATTLE



ACROSS 162,000HA

3,108

HEAD OF SHEEP



ACROSS 162,000HA

CONVERSION OF 5 PRIORITY WINDMILLS TO SOLAR SYSTEMS TO IMPROVE SAFETY AND OPERATIONAL EFFICIENCY



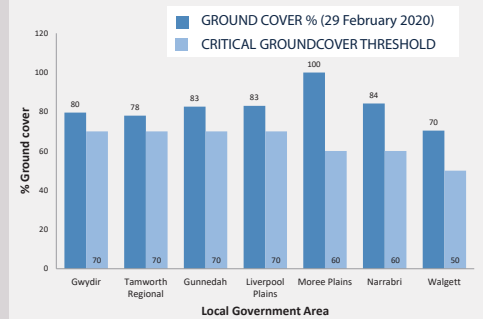
191

PERMITS
ISSUED

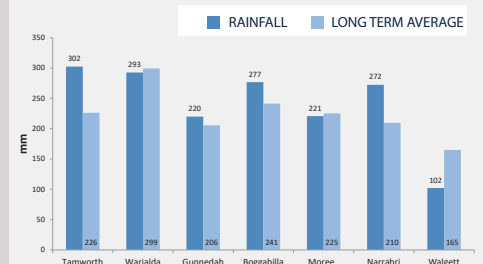
WALKING STOCK APPLICATIONS ARE NOW BEING PROCESSED. DESTINATION ONLY CONDITIONS HAVE BEEN LIFTED DUE TO INCREASED RAINFALL. MAXIMUM MOB SIZE OF 600 DRY CATTLE

LARGE SCALE WEED SPRAYING PROGRAM BEING CONDUCTED FOCUSING ON HARRISIA CACTUS AND AFRICAN BOXTHORN

Avg. TSR Groundcover Levels as at 29 February 2020



North West LLS 90 Day Rainfall January - February 2020



PASTURE CONDITIONS

MONTHLY PASTURE GROWTH RATES - INCREASING - GROWTH RATES UP TO 100KGDM/HA PER MONTH

PASTURE BIOMASS - INCREASING - EASTERN AREAS ARE BETWEEN 500KGDM/HA AND 1000KGDM/HA (AUSSIE GRASS). *North West LLS targets a pasture biomass of 1200kgDM/ha or pasture utilisation levels above 10cm as suitable for grazing

GROUND COVER - SIGNIFICANT IMPROVEMENT DUE TO WIDESPREAD RAIN EVENTS

INVASIVE SPECIES

BAITS ISSUED



1,895 kg

ACROSS 9
HOLDINGS



4,635 baits

ACROSS 142
HOLDINGS



1,217 baits

ACROSS 37
HOLDINGS



17 kg

ACROSS 2
HOLDINGS

APPLICATIONS FOR THE ANNUAL AERIAL WILD DOG BAITING PROGRAM HAVE BEEN COMPILED AND SUBMITTED IN CONJUNCTION WITH WILD DOG CONTROL ASSOCIATIONS (PRIVATE AND PUBLIC LANDHOLDERS) TOTALLING APPROX 12,000 BAITS

2 WILD DOG AWARENESS WORKSHOPS WERE HELD IN EMERGING AREAS TO EQUIP LANDHOLDERS WITH THE KNOWLEDGE OF HOW TO IDENTIFY AND UNDERSTAND WILD DOG BEHAVIOUR

ALMOST 3.5 TONNES OF FREE GRAIN ISSUED FOR TRAPPING & BAITING PROGRAMS TO CONTROL FERAL PIGS PRIOR TO SOWING OF WINTER CROPS

VERTEBRATE PESTICIDE TRAINING FOR LANDHOLDERS IN FEBRUARY & MARCH HAD 26 PARTICIPANTS

BIOSECURITY ANIMAL HEALTH & WELFARE



169

DISEASE
INVESTIGATIONS



454

ADVISORY
CONSULTATIONS

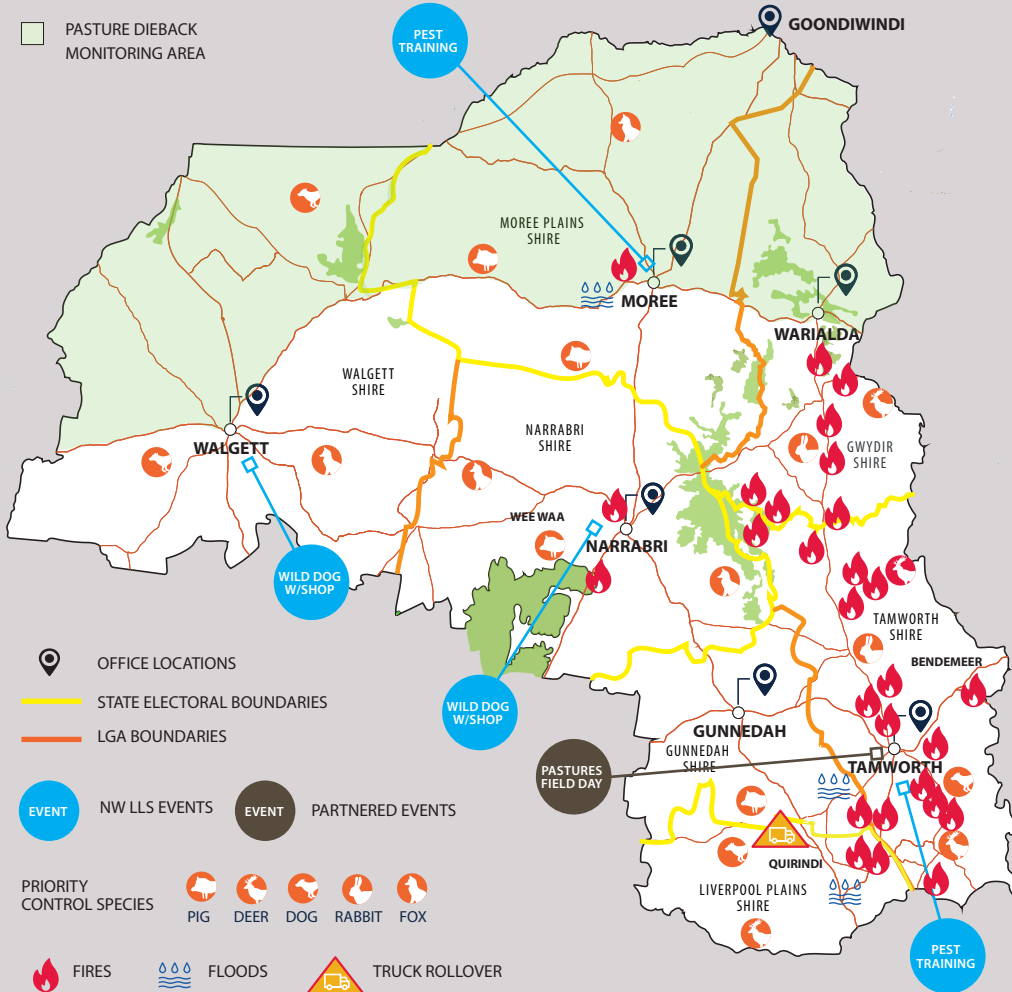
INVESTIGATIONS AND CONSULTATIONS WERE PRIMARILY LIVESTOCK HEALTH ISSUES ASSOCIATED WITH TRANSITION TO GREEN PASTURE. RECENT RAIN RESULTED IN AN INCREASE IN CASES OF NITRATE/ NITRITE POISONING AND BOVINE EPHEMERAL FEVER

TELL US YOUR PRIORITIES

Put them on the map

TAKE A PHOTO OF YOUR PRIORITIES AND EMAIL TO ADMIN.NORTHWEST@LLS.NSW.GOV.AU

THIS QUARTER HAD A SIGNIFICANT IMPACT ON 'BUSINESS AS USUAL' ACTIVITIES. RESOURCES WERE DIRECTED TO AGRICULTURAL ANIMAL SERVICES FUNCTIONAL AREA (AASFA) FOR FIRE AND FLOOD RESPONSE AND MANY OF OUR EVENTS WERE CANCELLED DUE TO COVID-19 RESTRICTIONS



EMERGENCY MANAGEMENT



31

FIRES IN
NW LLS REGION

213

LANDHOLDERS
AFFECTED BY FIRE

RESPONSE

STAFF HAVE CONTRIBUTED MORE THAN 25 DAYS TO AGRICULTURAL ANIMAL SERVICES FUNCTIONAL AREA TO SUPPORT ROLES UNDERTAKEN DURING THE FIRES FOR THE NW LLS REGION AND SOUTHERN NSW FIRES

2 STAFF SUPPORTED LANDHOLDERS BY COORDINATING EMERGENCY ASSISTANCE DURING RECENT FLOOD EVENTS NEAR MOREE AND STORM ACTIVITY AT WERRIS CREEK AND WALLABADAH

3 STAFF ASSISTED AT A LIVESTOCK TRUCK ROLL OVER UNDERTAKING LIVESTOCK ASSESSMENT AND HUMANE DESTRUCTION OF SHEEP



70 FIRE AFFECTED LANDHOLDERS WERE PROVIDED WITH FIRE RECOVERY INFORMATION

WEED ACTION PROGRAM

INSPECTIONS

6,102km ROADSIDE HIGH RISK PATHWAYS

166 PRIVATE PROPERTY HIGH RISK AREAS

4,464km WATERWAY HIGH RISK PATHWAYS

441 PRIVATE PROPERTIES, PRIORITY SITES, TSRS AND HIGH RISK SITES

NORTH WEST LOCAL CONTROL AUTHORITIES ARE WORKING IN CONJUNCTION WITH NWLLS TO DEVELOP THE WEEDS ACTION PLAN FOR 2020-2025

GOALS AND OBJECTIVES OF THE PLAN INCLUDE:

- EXCLUDE: PREVENT THE ESTABLISHMENT OF NEW INVASIVE SPECIES
- ERADICATE OR CONTAIN: ELIMINATE OR PREVENT THE SPREAD OF NEW INVASIVE SPECIES
- EFFECTIVELY MANAGE: REDUCE THE IMPACTS OF WIDESPREAD INVASIVE SPECIES
- CAPACITY BUILDING: ENSURE NSW HAS THE ABILITY AND COMMITMENT TO MANAGE INVASIVE SPECIES



Local Land
Services

GUNNEDAH
PO Box 546 | 35-37 Abbott Street
Gunnedah NSW 2380
T: 02 6742 9220 F: 02 6742 4022

GOONDIWINDI
116 Marshall St
Goondiwindi QLD 4390
T: 07 4671 4302

MOREE
PO Box 253 | 203 Balo Street
Moree NSW 2400
T: 02 6750 9000 F: 02 6752 4368

NARRABRI
PO Box 466 | 101 Barwan Street
Narrabri NSW 2390
T: 02 6790 7600 F: 02 6792 1738

TAMWORTH
Tamworth Agricultural Institute
4 Marsden Park Road, Calala NSW 2340
T: 02 6764 5900 F: 02 6764 5995

WALGETT
PO Box 32 | 75 Fox Street
Walgett NSW 2832
T: 02 6828 6400 F: 02 6828 1507

WARRIALDA
PO Box 13 | 19 Stephen Street
Warralida NSW 2402
P: 02 6729 2000 F: 02 6729 1716