

Farming Forecaster for the Riverina

Dynamic data to improve pasture and grazing decisions



Developed with graziers, Farming Forecaster places soil moisture, local weather, pasture production and livestock performance information at your fingertips.

What is the Farming Forecaster?

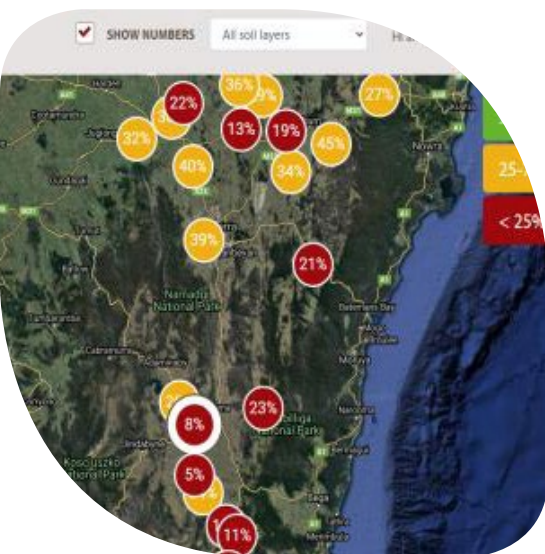
- **Real-time data:** see how rainfall events/changes in weather patterns affect soil moisture and future pasture production.
- **A risk management tool:** using leading edge technology, Farming Forecaster provides a road map of pasture availability and predicted livestock performance over the next 3-4 months.

The environmental benefits of well managed pasture includes reduced soil erosion; improved water quality; increased plant vigor and production.

Improving grazing management will result in more complete vegetative cover and improved soil structure that will allow a higher percentage of the rainfall to permeate the soil where it can be used for plant growth rather than running off where it can result in soil erosion and sedimentation problems.

The ecological processes increase including decomposition of manure in a highly managed pasture. Nutrients can then be recycled several times during the growing season. The overall soil quality improves with improved grazing management.

Farming Forecaster will provide quality pasture and livestock data on a continuous basis which will improve producers' confidence in assessing seasonal trends.



Local Land Services



National Landcare Program



www.ils.nsw.gov.au/Riverina



Soil moisture—how much is in the ‘bank’?

Soil moisture probes provide a real-time measure of current soil moisture at various depths down the soil profile. This information can be extremely valuable when making decisions at critical stages of the season.

Where probes are installed, soil temperature and rainfall are also measured. You can instantly see what impact a rain event has on soil moisture.

Pasture growth & livestock performance—what can I expect in the coming months?

Using historical climate data and leading-edge technology, Farming Forecaster provides a preview of the likely range in pasture availability and livestock performance over the next 3 – 4 months.

This information can assist with difficult decisions around buying or selling livestock, or purchasing supplementary feeding.

Local weather information at your fingertips:

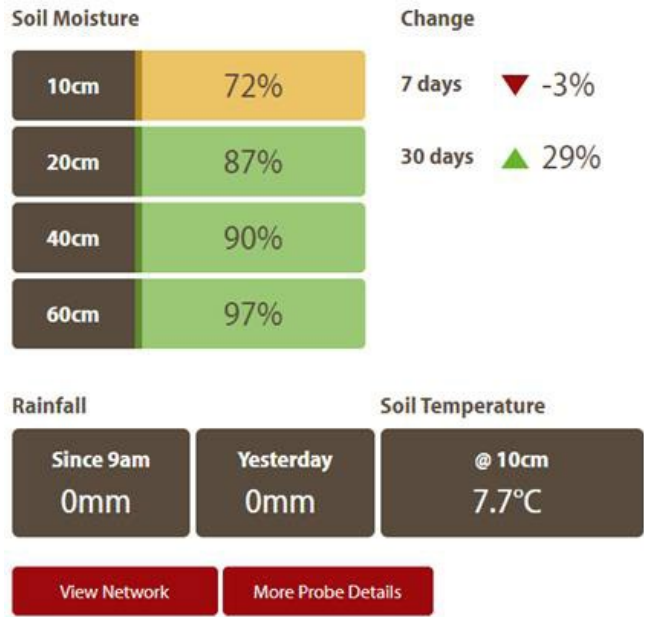
- 7 day forecast provided by the Bureau of Meteorology (BoM)
- Livestock specific warnings—e.g. sheep graziers alert and heat stress warnings for cattle and sheep
- Local spray risk information (wind speed/ direction, Delta T and spray risk indicator system)
- 3 month rainfall outlook (source provided from the BoM Model).

Farming is a risky business at times, and with uncertainties around the weather and commodity markets it pays to understand what is at stake.

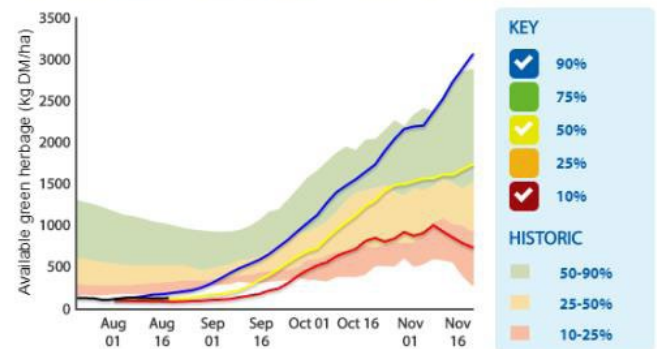
If I'm placing a bet I need to know what the odds are and make sure they are in my favour. And also what I stand to lose if it goes against me.

This tool will have environmental outcomes as well and help prepare farmers for future droughts.

Richard Taylor—Producer



Projected green herbage available relative to historic variation



Find out more

Through this project we will be adding an additional 20 Farming Forecaster site locations in the eastern Riverina to the existing platform. If you would like to be involved please contact:

Project Manager – Geoff Minchin

Email: geoffrey.minchin@lls.nsw.gov.au
Phone: 0429 842 489

Project officer – Lakna Gunawardana

Email: lakna.gunawardana@lls.nsw.gov.au
Phone: 0428 063 708

The Farming Forecaster project is supported by the Commonwealth's National Landcare Program through their Smart Farming Partnerships project. We would like to acknowledge the original developers of the Farming Forecaster platform through the Next Generation Forecasting Project Consortium: Tablelands Farming Systems, Monaro Farming Systems, Bookham Ag Bureau, South East Local Services working with CSIRO and Square V Website Developers.