

OUR YEAR IN REVIEW

South East Local Land Services



I am pleased to report that 2017 was a year of both consolidation and expansion for South East Local Land Services. Our new local team structure is now bedded down, and I can honestly say that we've never been better placed to meet the needs of our customers, stakeholders and investors.

Anthony Marshall joined us in the role of general manager in July. Anthony has set about refining some of our processes to make things simpler for staff and to ultimately allow on the ground staff to spend more time out in the field.

The new biosecurity legislation came into effect in July. It involves a change of approach to managing biosecurity risks, replacing 14 outdated acts with a modern, cohesive structure. I encourage you to take some time to become familiar with the new general biosecurity duty. Please contact your local team if you have any questions.

The new sustainable land management framework (Native Vegetation) under the new Biodiversity Act 2015 took effect in August. This, along with the transfer of the Soil Conservation Service and Office of Private Forestry into Local Land Services, will broaden the range of services offered to customers across a range of integrated land management matters.

The Feral Fighters program continues to go from strength to strength with another 537 land managers joining the program. There are now over 2,000 land managers across the region committed to controlling pest animals on their properties. This is a great result for local communities participating.

Please feel free to drop into one of our offices and introduce yourself. I am very proud of our staff in the South East, they are committed to support you and deliver a quality service that makes a difference in our landscapes, industries and local communities.

David Mitchell,
Chair, South East Local Land Services Board

2017 Snapshot



We assisted over 125 land managers and community groups to enhance and protect the environment by providing \$ 3.7 million in incentive funding.



We're the boots on the ground to support agriculture and animals in an emergency and responded to six emergencies in 2017. Nearly half of our staff have been trained to assist in an emergency or biosecurity outbreak.



We worked with land managers in supporting 13 wild dog management plans with 39,600 baits issued to 750 properties involved in baiting over an area of 497,000 ha across the region.



We support Aboriginal people to care for Country, share traditional land management knowledge and help protect and strengthen Aboriginal cultural heritage. Nearly 35 ha of land with Aboriginal cultural value was managed along with one Aboriginal site.



We increased the capacity of land managers to improve primary production and natural resource management and trained 248 customers at training events.



More than 560 land managers undertook vertebrate pesticide training.



Staff provided advice to 1,500 land managers regarding biosecurity plans.



Local Land Services

Our on ground achievements

We negotiated **112** voluntary conservation agreements, protecting and sustaining **3,000 ha** of land for biodiversity enhancement.

We provided education and training workshops to build the capacity of **670** land managers we now have over **2,000** land managers involved in our Feral Fighters program to control wild dogs, foxes, pigs and deer.

More than **570 ha** of land was managed for sustainable grazing.

We enhanced and rehabilitated **120 ha** of wetland and **300 ha** of coastal native vegetation.

We enhanced and rehabilitated **2,600 ha** of land and protected **2,000 ha** of vegetation through fencing.

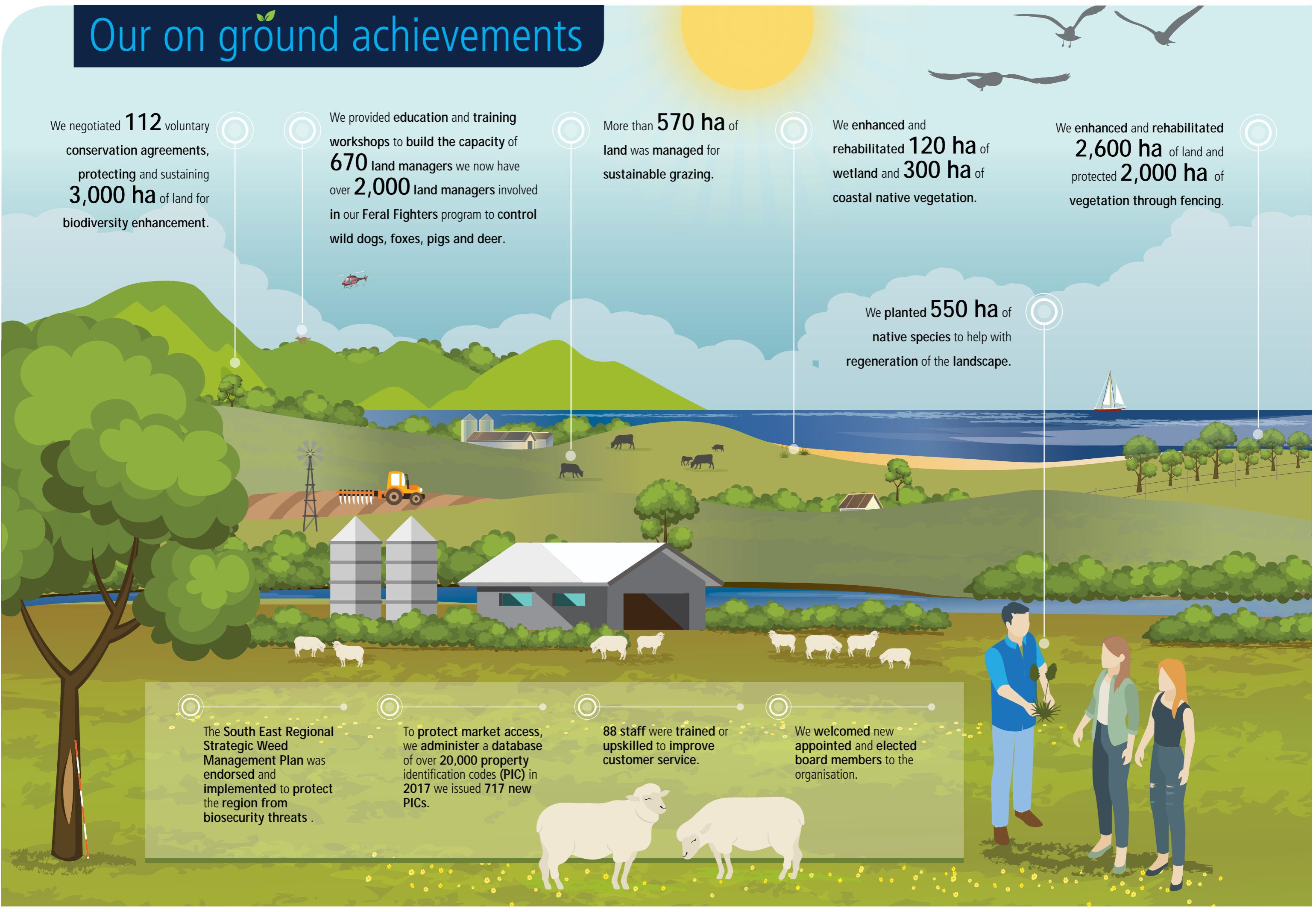
We planted **550 ha** of native species to help with regeneration of the landscape.

The South East Regional Strategic Weed Management Plan was endorsed and implemented to protect the region from biosecurity threats.

To protect market access, we administer a database of over 20,000 property identification codes (PIC) in 2017 we issued 717 new PICs.

88 staff were trained or upskilled to improve customer service.

We welcomed new appointed and elected board members to the organisation.



Contact details:

South East Local Land Services

W: www.lls.nsw.gov.au/southeast

www.facebook.com/SouthEastLLS/

P: 1300 795 299

Office locations

Far South Coast:

Rooftop Level,
Sapphire Marketplace
2/83 Upper Street
PO Box 118
Bega NSW 2550
Ph: 02 6491 7800
Fax: 02 6492 3019
Office hours: 8.30 am - 4.30 pm

South Coast:

13 Scholfields Lane
PO Box 63
Berry NSW 2535
Ph: 02 4464 6000
Fax: 02 4464 2113
Office hours: 8.30 am - 4.30 pm

Palerang:

42 Ryrie Street
PO Box 97
Braidwood NSW 2622
Ph: 02 4842 2594
Fax: 02 4842 2655
Office hours: 9 am - 5 pm

Monaro:

26 Soho Street
PO Box 26
Cooma NSW 2630
Ph: 02 6452 1455
Fax: 02 6452 2080
Office hours: 8.30 am - 4.30 pm

Goulburn

159 Auburn Street
PO Box 67
Goulburn NSW 2580
Ph: 02 4824 1900
Fax: 02 4828 6750
Office hours: 8.30 am - 4.30 pm

Yass

13 Mitchell Street
PO Box 10
Yass NSW 2582
Ph: 02 6118 7700
Fax: 02 6226 2989
Office hours: 8.00 am - 4.30 pm