

NORTH COAST

No Space for Weeds

20
22

CALENDAR

NORTH COAST

No Space for Weeds

Welcome to the 2022 No Space for Weeds Calendar

Weeds are a significant threat to our unique natural environment. They threaten the survival of hundreds of native plants and animals in NSW alone. They also impact the price of food, human health through allergies and asthma, recreational activities and our economy.

Everyone needs to do their bit to protect our land, water and food production from the risks posed by weeds.

This calendar aims to motivate you to take part in coordinated weed control programs across the region. Use it as a quick reference guide to help plan some of your weed control activities throughout the year.

We encourage you to make 2022 the year that you get on top of your weeds!

For more information about weeds and how to control them, go to the NSW WeedWise app or contact your local Council Weeds Officer for free advice.



IMAGE CREDITS:

Claire Lock (courtesy Biosecurity Queensland), Department of Agriculture and Fisheries Biosecurity Queensland

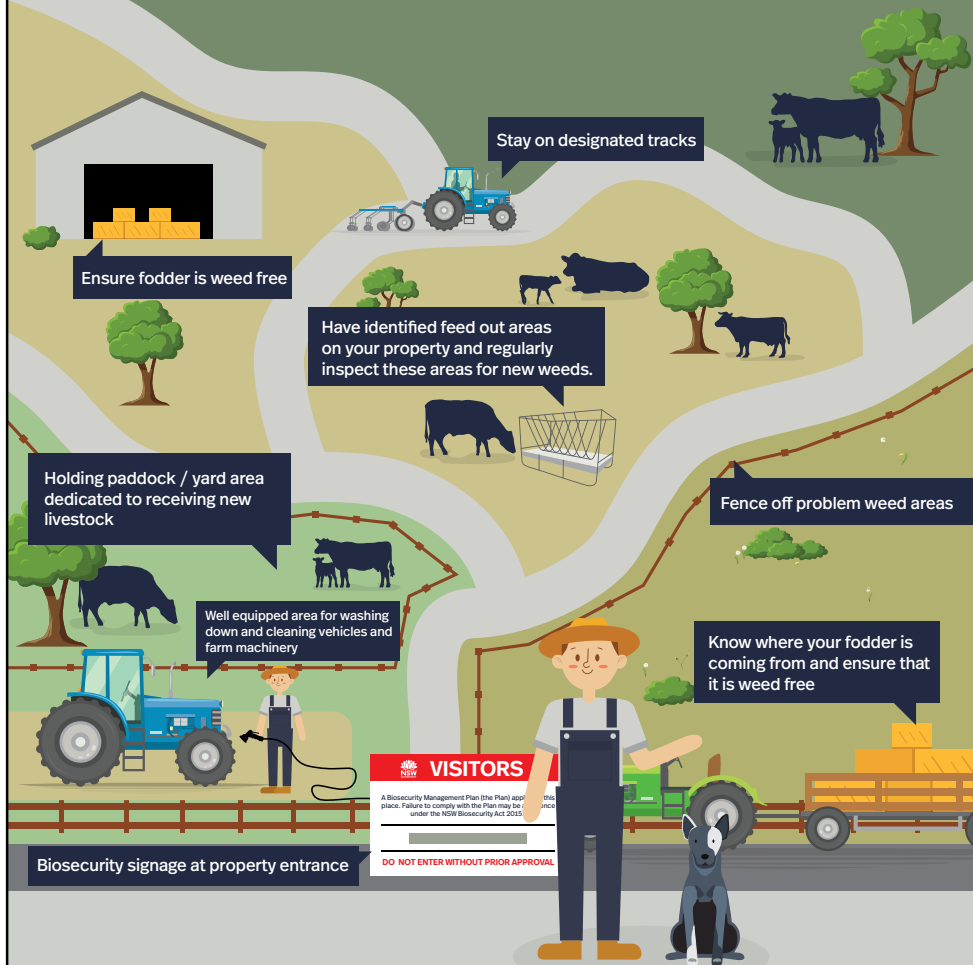
SHUTTERSTOCK IMAGE CREDITS:

(In order of first occurrence)

Ming Fern - thaweerat; Asystasia gangetica subsp. - Inrh Gallery; White Chinese violet - Anant Kasetsinsombut; Asystasia gangetica - Mang Kelin; Yellow Bells - Rati Siregar; Pueraria lobata - Johnwoodkim; Thorns on a Honey Locust tree - Jason Champagne; Leaves and fruits of strawberry guava - Hivaka; Branches of Honey locust tree - Olga Ilinich



STOP WEEDS AT THE GATE



USE THE STOP WEEDS AT THE GATE CHECKLIST TO:

- Reduce the risk of weed being BROUGHT to the property
- Reduce the risk of spread of weeds AROUND the property
- Reduce the risk of spread of weeds FROM the property
- Assist the landholder and contractors to MEET their General Biosecurity Duty



Department of
Primary Industries

NSW WeedWise

Got weeds? Get WeedWise!

ONLINE OR IN THE APP STORES

weeds.dpi.nsw.gov.au



Over 300 weed profiles in your pocket!

Close to one million views a year

"brilliant...this app is very, very helpful"



Prevention saves \$\$\$\$

New high risk weed incursions are priorities for management over widespread weeds.

This is because the most cost-effective way to minimise the impacts of weeds is to prevent them from being introduced in the first place or eradicating them before they become established.

Tropical Soda Apple

(*Solanum viarum*)

NON-CHEMICAL TREATMENT:

Restrict cattle movements and hand-pull plants. Burn entire plants or bury fruit very deep under the ground

CHEMICAL TREATMENT:

Spot spray with 50ml of Picloram 100 g/L + Triclopyr 300 g/L + Aminopyralid 8 g/L (e.g. Grazon Extra®) and a surfactant (e.g. Pulse) mixed with 10L of water



Parthenium Weed

(*Parthenium hysterophorus*)

CONTROL:

Please do not attempt to treat or dispose of this weed yourself. Report Parthenium Weed if you see it anywhere in NSW by calling **1800 680 244**. NSW DPI will lead an initial response for the treatment and disposal of the plant to stop it from spreading.



For more information download the NSW WeedWise App or contact your local Weeds Officer for FREE advice on weed control methods. See back page for contact details.



JANUARY

MON	TUES	WED	THURS	FRI	SAT	SUN
31					1 NEW YEARS DAY	2
3 ●	4	5	6	7	8	9
10 ☾	11	12	13	14	15	16
17	18 ○	19	20	21	22	23
24	25	26 ● AUSTRALIA DAY	27	28 TERM 1 (EASTERN) START	29	30

WEEDS TO CONTROL THIS MONTH

Effective weed control requires on-going maintenance. Check the boxes and make note of the date when you treat these weeds and repeat every 3 months.

☐

TROPICAL SODA APPLE
Treated on this day

☐

PARTHENIUM WEED
Treated on this day



TROPICAL SODA APPLE



GLORY LILY

(*Gloriosa superba*)

HOW TO IDENTIFY GLORY LILY:

- ▶ Toxic climbing plant with distinctive red, orange and yellow flowers that outcompetes other plants especially in coastal dune areas
- ▶ Contain the spread of this plant north of Bellingen Shire Council and eradicate new infestations to the south
- ▶ Should not be sold, traded, grown or released into the environment

NON-CHEMICAL TREATMENT:

Manually remove where appropriate

CHEMICAL TREATMENT:

Foliar spray with 50ml Glyphosate 360 g/L (e.g. Roundup®) mixed with 2.5L water

CONSULT THE PRODUCT LABEL PRIOR TO USING HERBICIDES

Ming Asparagus

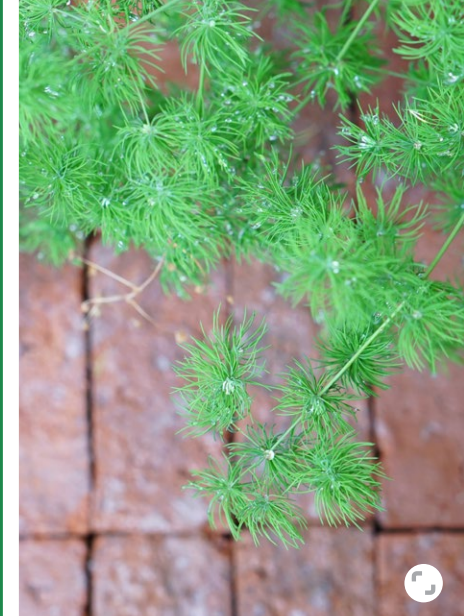
(*Asparagus macowanii*)

NON-CHEMICAL TREATMENT:

Manually remove where appropriate. Ensure plant material does not contact the soil

CHEMICAL TREATMENT:

Foliar spray with 20mL Glyphosate 360 g/L and 1g Metsulfuron-methyl 600g/kg (e.g. Roundup® and Brushoff®) in 10L water



Water Hyacinth

(*Eichhornia crassipes*)

NON-CHEMICAL TREATMENT:

Where appropriate, manually remove or drain dams or ponds until the plant and substrate are completely dry. Ensure all plant material is removed from wet and damp areas

CHEMICAL TREATMENT:

Foliar spray with herbicide registered for aquatic use

CONSULT THE PRODUCT LABEL PRIOR TO USING HERBICIDES



For more information download the NSW WeedWise App or contact your local Weeds Officer for FREE advice on weed control methods. See back page for contact details.

FEBRUARY

MON	TUES	WED	THURS	FRI	SAT	SUN
	1 ●	2	3	4 TERM 1 (WESTERN) START	5	6
7	8	9 ○	10	11	12	13
14	15	16	17 ○ LORD HOWE ISLAND DISCOVERY DAY	18	19	20
21	22	23	24 ●	25	26	27
28						

WEEDS TO CONTROL THIS MONTH

Effective weed control requires on-going maintenance. Check the boxes and make note of the date when you treat these weeds and repeat every 3 months.

☐

GLORY LILY

Treated on this day

☐

MING ASPARAGUS

Treated on this day

☐

WATER HYACINTH

Treated on this day



GLORY LILY



PARTHENIUM WEED

(*Parthenium hysterophorus*)

HOW TO IDENTIFY PARTHENIUM WEED:

- ▶ Tall erect annual herb with pale green leaves covered with soft fine hair, creamy-white star shaped flowers with many tiny florets and ribbed stems that become woody with age
- ▶ In NSW this plant is Prohibited Matter, if you see it you must report it to your local Council Weed Officer or the Biosecurity Hotline

CONTROL:

Please do not attempt to treat or dispose of this weed yourself. Report Parthenium Weed if you see it anywhere in NSW by calling **1800 680 244**. NSW DPI will lead an initial response for the treatment and disposal of the plant to stop it from spreading

! IF YOU FIND ANY OF THESE WEEDS IMMEDIATELY CALL THE BIOSECURITY HOTLINE 1800 680 244 OR YOUR LOCAL COUNCIL WEED OFFICER. DO NOT TRY TO CONTROL THESE WEEDS YOURSELF.

PROHIBITED
MATTER
MONTH

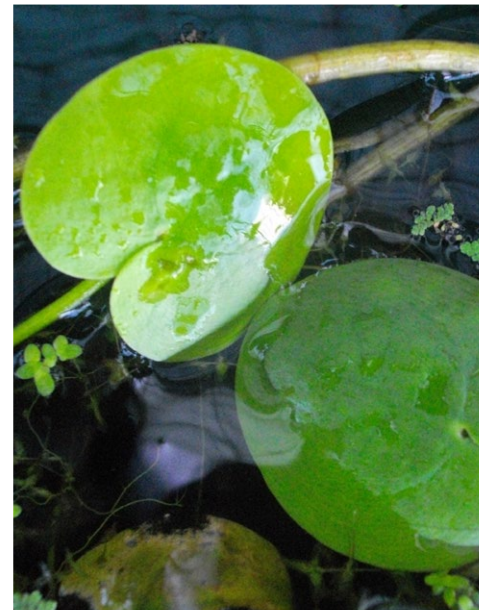
Miconia

(*Miconia* species)

CONTROL:

Please do not attempt to treat or dispose of this weed yourself. Report Miconia if you see it anywhere in NSW by calling 1800 680 244. NSW DPI will lead an initial response for the treatment and disposal of the plant to stop it from spreading

Control needs to be carried out carefully to prevent the re-establishment of massive numbers of seedlings from the soil seedbank



Frogbit

(*Limnobium laevigatum*)

CONTROL:

Please do not attempt to treat or dispose of this weed yourself. Report Frogbit if you see it anywhere in NSW by calling 1800 680 244. NSW DPI will lead an initial response for the treatment and disposal of the plant to stop it from spreading



For more information download the NSW WeedWise App or contact your local Weeds Officer for FREE advice on weed control methods. See back page for contact details.

MARCH

MON	TUES	WED	THURS	FRI	SAT	SUN
	1	2	3 ●	4	5	6
7	8	9	10 ☾	11	12	13
					COMBOYNE SHOW	COMBOYNE SHOW
14	15	16	17	18 ○	19	20
21	22	23	24	25 ☾	26	27
28	29	30	31			

WEEDS TO CONTROL THIS MONTH

Effective weed control requires on-going maintenance. Check the boxes and make note of the date when you treat these weeds and repeat every 3 months.

☐

PARTHENIUM

Treated on this day

☐

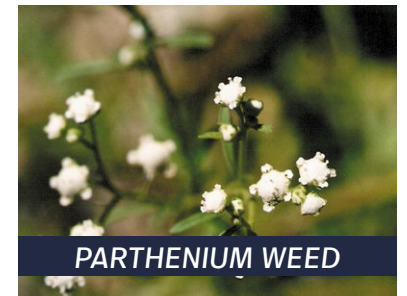
MICONIA

Treated on this day

☐

FROGBIT

Treated on this day



PARTHENIUM WEED



Giant Devils Fig

(*Solanum chrysotrichum*)

NON-CHEMICAL TREATMENT:

Hand-pull seedlings or dig out larger plants

CHEMICAL TREATMENT:

Cut stem and paint the stump with undiluted Picloram 44.7g/kg + Aminopyralid 4.47g/L (Vigilant II®)



TROPICAL SODA APPLE LOOK ALIKES



Devils Fig

(*Solanum torvum*)

NON-CHEMICAL TREATMENT:

Manually remove where appropriate

CHEMICAL TREATMENT:

Basal bark, cut and paint, cut scrape paint, stem inject and foliar spray with herbicide

TROPICAL SODA APPLE

(*Solanum viarum*)

HOW TO IDENTIFY TROPICAL SODA APPLE:

- ▶ Prickly shrub that infested over 500,000 hectares of the USA in just 5 years
- ▶ In NSW this plant is subject to a Biosecurity Control Order and must be eradicated
- ▶ If you see this plant, call your local Council Weed Officer

NON-CHEMICAL TREATMENT:

Restrict cattle movements and hand-pull plants. Burn entire plants or bury fruit very deep under the ground

CHEMICAL TREATMENT:

Spot spray with 50ml of Picloram 100 g/L + Triclopyr 300 g/L + Aminopyralid 8 g/L (e.g. Grazon Extra®) and a surfactant (e.g. Pulse) mixed with 10L of water

CONSULT THE PRODUCT LABEL PRIOR TO USING HERBICIDES

CONSULT THE PRODUCT LABEL PRIOR TO USING HERBICIDES



For more information download the NSW WeedWise App or contact your local Weeds Officer for FREE advice on weed control methods. See back page for contact details.

APRIL

MON	TUES	WED	THURS	FRI	SAT	SUN
				1 ●	2	3
4	5	6	7	8 TERM 1 END	9 ○	10
11	12	13	14 TERM 1 END	15 GOOD FRIDAY	16 EASTER SATURDAY	17 ○ EASTER SUNDAY
18 EASTER MONDAY	19	20	21	22 WAUCHOPE SHOW	23 ● WAUCHOPE SHOW	24
25 ANZAC DAY	26 TERM 2 START KEMPSEY SHOW	27 KEMPSEY SHOW	28	29 BONALBO SHOW MACKSVILLE SHOW	30 BONALBO SHOW MACKSVILLE SHOW	

WEEDS TO CONTROL THIS MONTH

Effective weed control requires on-going maintenance. Check the boxes and make note of the date when you treat these weeds and repeat every 3 months.

☐

TROPICAL SODA APPLE
Treated on this day

☐

GIANT DEVILS FIG
Treated on this day

☐

DEVILS FIG
Treated on this day



TROPICAL SODA APPLE



SENEGAL TEA PLANT

(*Gymnocoronis spilanthoides*)

HOW TO IDENTIFY SENEGAL TEA PLANT:

- ▶ Highly invasive and destructive aquatic weed that impedes flow, ecosystem function and recreational activities
- ▶ Must be eradicated in the North Coast, so call your local Council Weed Officer if you have seen it
- ▶ Should not be sold, traded, grown or released into the environment

CONTACT YOUR LOCAL COUNCIL WEED OFFICER FOR ADVICE AND DISPOSAL

NON-CHEMICAL TREATMENT:

Manually remove where appropriate. Follow strict hygiene procedures, bagging all plant material

CHEMICAL TREATMENT:

Foliar spray with herbicide registered for aquatic use

NOTIFY YOUR
WEED OFFICER
MONTH

! NOTIFY YOUR WEED OFFICER IF YOU FIND SENEGAL TEA PLANT, CHINESE VIOLET OR ALLIGATOR WEED

Chinese Violet

(*Asystasia gangetica*
subsp. *micrantha*)

NON-CHEMICAL TREATMENT:

Hand remove all plants and collect all seed pods to be collected and disposed of by your local Weed Officer

CHEMICAL TREATMENT:

Spot spray using 30ml of MCPA 150g/L + Dicamba 25g/L (e.g. Yates Lawn Weedkiller Bindii & Clover Concentrate) mixed with 10L of water



Alligator Weed

(*Alternanthera philoxeroides*)

Please do not attempt to treat or dispose of this weed yourself. Report this plant to your local Council Weed Officer if you see it anywhere in the North Coast region

CONSULT THE PRODUCT LABEL PRIOR TO USING HERBICIDES



For more information download the NSW WeedWise App or contact your local Weeds Officer for FREE advice on weed control methods. See back page for contact details.

MAY

MON	TUES	WED	THURS	FRI	SAT	SUN
30 ●	31					1 ●
2	3	4	5	6	7	8
				GRAFTON SHOW	GRAFTON SHOW	
9 ☾	10	11	12	13	14	15
				COFFS HARBOUR SHOW	COFFS HARBOUR SHOW	COFFS HARBOUR SHOW
16 ○	17	18	19	20	21	22
					BELLINGEN SHOW	BELLINGEN SHOW
23 ☾	24	25	26	27	28	29

WEEDS TO CONTROL THIS MONTH

Effective weed control requires on-going maintenance. Check the boxes and make note of the date when you treat these weeds and repeat every 3 months.

☐

SENEGAL TEA PLANT
Treated on this day

☐

CHINESE VIOLET
Treated on this day

☐

ALLIGATOR WEED
Treated on this day



SENEGAL TEA PLANT

Do not buy or sell weeds on the internet

Don't buy, sell or move plants, flowers or foliage that put the North Coast or NSW at risk. If you sell regional or state priority weeds, either on the internet or in person, you are committing an offence under the Biosecurity Act 2015 and the plants will be seized and destroyed and you could be fined. Restrictions apply to all parts of the plant, and to cultivars and hybrids.

Chinese Violet

(Asystasia gangetica subsp. micrantha)

NON-CHEMICAL TREATMENT:

Hand remove all plants and collect all seed pods to be collected and disposed of by your local Weed Officer

CHEMICAL TREATMENT:

Spot spray using 30ml of MCPA 150g/L + Dicamba 25g/L (e.g. Yates Lawn Weedkiller Bindii & Clover Concentrate) mixed with 10L of water



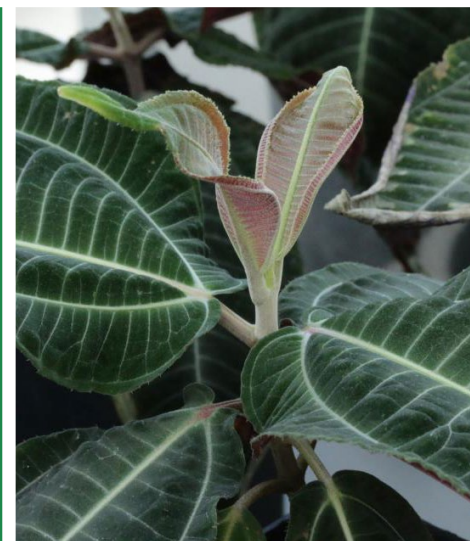
Miconia

(Miconia species)

CONTROL:

Please do not attempt to treat or dispose of this weed yourself. Report Miconia if you see it anywhere in NSW by calling 1800 680 244. NSW DPI will lead an initial response for the treatment and disposal of the plant to stop it from spreading

Control needs to be carried out carefully to prevent the re-establishment of massive numbers of seedlings from the soil seedbank



For more information download the NSW WeedWise App or contact your local Weeds Officer for FREE advice on weed control methods. See back page for contact details.



RAINFALL CHART

NORTH COAST No Space for Weeds

2022

[illegible][illegible]

15												
16												
17												
18												
19												
20												
21												
22												
23												
24												
25												
26												
27												
28												
29												
30												
31												
TOTAL RAIN												
TOTAL DAYS												



Contact your Local Control Authority to connect with the
Weeds Officer for your area

JUNE

MON	TUES	WED	THURS	FRI	SAT	SUN
		1	2	3	4	5
6	7	8 	9	10	11	12
13	14 	15	16	17	18	19
QUEENS BIRTHDAY						
20	21 	22	23	24	25	26
27	28	29 	30			

WEEDS TO CONTROL THIS MONTH

Effective weed control requires on-going maintenance. Check the boxes and make note of the date when you treat these weeds and repeat every 3 months.

☐

CHINESE VIOLET
Treated on this day

☐

MICONIA
Treated on this day



CHINESE VIOLET



MYSORE THORN

(*Caesalpinia decapetala*)

HOW TO IDENTIFY MYSORE THORN:

- ▶ Aggressive prickly shrub that forms dense thickets and invades environmental areas, creek banks, roadsides, pastures and bushland
- ▶ Contain the spread of this plant north of Clarence Valley Council and eradicate new infestations to the south
- ▶ Should not be sold, traded, grown or released into the environment

NON-CHEMICAL TREATMENT:

Manually remove where appropriate

CHEMICAL TREATMENT:

Cut and paint, cut scrape paint, frill, stem inject, or foliar spray with herbicide

CONSULT THE PRODUCT LABEL PRIOR TO USING HERBICIDES

Bitou Bush

(*Chrysanthemoides monilifera*
subsp. *rotundata*)

NON-CHEMICAL TREATMENT:

Graze infested areas, hand-pull or steam seedlings and dig out larger plants

CHEMICAL TREATMENT:

Spot sprays using 100ml of Glyphosate 360g/L (e.g. Roundup®) mixed with 10L of water



Yellow Bells

(*Tecoma stans*)

NON-CHEMICAL TREATMENT:

Hand-pull seedlings or mechanically remove larger trees

CHEMICAL TREATMENT:

Stem inject or cut and paint the stump with 1 part Glyphosate 360g/L (e.g. Roundup®) and 1.5 parts water

CONSULT THE PRODUCT LABEL PRIOR TO USING HERBICIDES



For more information download the NSW WeedWise App or contact your local Weeds Officer for FREE advice on weed control methods. See back page for contact details.

JULY

MON	TUES	WED	THURS	FRI	SAT	SUN
				1 TERM 2 END	2	3
4	5	6	7 ☾	8	9	10
11	12	13	14 ◯	15	16	17
18	19	20	21 ☾	22	23	24
TERM 3 START						
25	26	27	28	29 ●	30	31

WEEDS TO CONTROL THIS MONTH

Effective weed control requires on-going maintenance. Check the boxes and make note of the date when you treat these weeds and repeat every 3 months.

☐

MYSORE THORN
Treated on this day

☐

BITOU BUSH
Treated on this day

☐

YELLOW BELLS
Treated on this day



MYSORE THORN



CATS CLAW CREEPER

(*Dolichandra unguis-cati*)

HOW TO IDENTIFY CATS CLAW CREEPER:

- ▶ Invasive, woody vine with yellow flowers that kills trees and shrubs and reduces food and shelter for native animals
- ▶ Should not be sold, traded, grown or released into the environment

NON-CHEMICAL TREATMENT:

Manually remove where appropriate. Ensure plant material does not contact the soil. Biological controls are available

CHEMICAL TREATMENT:

Spot sprays using 100ml of Glyphosate 360 g/L (e.g. Roundup®) mixed with 10L water

BIOLOGICAL
CONTROL
MONTH

! CONTACT YOUR LOCAL COUNCIL WEED OFFICER ABOUT BIOLOGICAL CONTROL AGENTS AVAILABLE FOR CATS CLAW CREEPER, MADEIRA VINE AND SALVINIA

MADEIRA VINE

(*Anredera cordifolia*)

NON-CHEMICAL TREATMENT:

Manually remove where appropriate. Ensure all plant material is bagged and removed from the site

CHEMICAL TREATMENT:

Foliar spray or stem scrape (5–10 cm) in strips for as high as you can reach and paint immediately with undiluted Glyphosate 360 g. Avoid ringbarking. Never cut and paint



SALVINIA

(*Salvinia molesta*)

NON-CHEMICAL TREATMENT:

Manually remove where appropriate. Ensure all plant material is bagged and removed from the site

CHEMICAL TREATMENT:

Continuously suppress using weed harvesters. Foliar spray with herbicide registered for aquatic use

CONSULT THE PRODUCT LABEL PRIOR TO USING HERBICIDES



For more information download the NSW WeedWise App or contact your local Weeds Officer for FREE advice on weed control methods. See back page for contact details.

AUGUST

MON	TUES	WED	THURS	FRI	SAT	SUN
1	2	3	4	5 	6	7
8	9	10	11	12 	13	14
15	16	17	18	19 	20	21
22	23	24	25	26	27 	28
29	30	31				

WEEDS TO CONTROL THIS MONTH

Effective weed control requires on-going maintenance. Check the boxes and make note of the date when you treat these weeds and repeat every 3 months.

☐

CATS CLAW CREEPER
Treated on this day

☐

MADEIRA VINE
Treated on this day

☐

SALVINIA
Treated on this day



CATS CLAW CREEPER



WHITE BLACKBERRY

(*Rubus niveus*)

HOW TO IDENTIFY WHITE BLACKBERRY:

- ▶ Prickly scrambling shrub with dark coloured berries and white stems. It forms thickets that can prevent other plants from growing
- ▶ Must be eradicated in the North Coast, call your local Council Weed Officer if you have seen it
- ▶ Should not be sold, traded, grown or released into the environment

NON-CHEMICAL TREATMENT:

Contact your local Council Weed Officer for advice. Manually remove where appropriate. Ensure all plant material is bagged and removed from the site

CHEMICAL TREATMENT:

Spot spray with Glyphosate 360 g/L with Metsulfuron-methyl 600 g/kg at the rate of 2L of Glyphosate plus 15 g of Brush-off mixed in 100 L of water

CONSULT THE PRODUCT LABEL PRIOR TO USING HERBICIDES

Kudzu

(*Pueraria lobata*)

NON-CHEMICAL TREATMENT:

Graze the infested area and/or trace vines back to underground tubers and dig them out

CHEMICAL TREATMENT:

Spot spray using 1-2g of Metsulfuron-methyl 600g/kg (e.g. Brush-off®) and a surfactant (e.g. Pulse) mixed with 10L of water.



Kidney Leaf Mud Plantain

(*Heteranthera reniformis*)

NON-CHEMICAL TREATMENT:

Carefully hand remove from waterways ensuring all fragments and roots are collected

CHEMICAL TREATMENT:

Spot spray with 200ml of Glyphosate 360g/L (Only products registered for aquatic use e.g. WeedMaster Duo®) mixed with 10L of water

CONSULT THE PRODUCT LABEL PRIOR TO USING HERBICIDES



For more information download the NSW WeedWise App or contact your local Weeds Officer for FREE advice on weed control methods. See back page for contact details.

SEPTEMBER

MON	TUES	WED	THURS	FRI	SAT	SUN
			1	2	3 WOODENBONG SHOW	4 
5	6	7	8	9	10 	11
12	13	14	15	16	17	18 
19	20	21	22	23 TERM 3 END	24	25
26 	27	28	29	30		

WEEDS TO CONTROL THIS MONTH

Effective weed control requires on-going maintenance. Check the boxes and make note of the date when you treat these weeds and repeat every 3 months.

☐

WHITE BLACKBERRY
Treated on this day

☐

KUDZU
Treated on this day

☐

KIDNEY LEAF MUD PLANTAIN
Treated on this day





HONEY LOCUST

(*Gleditsia triacanthos*)

HOW TO IDENTIFY HONEY LOCUST:

- ▶ Deciduous spiny tree that forms dense thickets, particularly along waterways, spreads rapidly from seed and is capable of out-competing and replacing native vegetation
- ▶ Contain the spread of this plant north of Clarence Valley Council and eradicate new infestations to the south (except Mann catchment)
- ▶ Should not be sold, traded, grown or released into the environment

NON-CHEMICAL TREATMENT:

Mechanically remove large plants and carefully hand-pull seedlings

CHEMICAL TREATMENT:

Basal bark with Starane™ Advanced and diesel. Application rate dependant on the size of the plant. See NSW WeedWise or the herbicide label

CONSULT THE PRODUCT LABEL PRIOR TO USING HERBICIDES

Cockspur Coral Tree

(*Erythrina crista-galli*)

NON-CHEMICAL TREATMENT:

Mechanically remove the plants and collect all fruit and branches on the ground to ensure they do not re-shoot

CHEMICAL TREATMENT:

Stem inject in a spiral up the trunk of the tree and branches with 1 part Glyphosate 360g/L (e.g. Roundup®) and 1.5 parts water



Common Thorn Apple

(*Datura stramonium*)

NON-CHEMICAL TREATMENT:

Seedlings and small plants can be hand pulled or dug out. Weeding will be easier in damp soil. Take care to remove as much of the root as possible otherwise plants might regrow

CHEMICAL TREATMENT:

Spot spray with 40ml Glyphosate 450 g/L (eg. Apparent Glyphosate) mixed with 10 L of water



CONSULT THE PRODUCT LABEL PRIOR TO USING HERBICIDES



For more information download the NSW WeedWise App or contact your local Weeds Officer for FREE advice on weed control methods. See back page for contact details.

OCTOBER

MON	TUES	WED	THURS	FRI	SAT	SUN
31					1	2
3 LABOUR DAY	4	5	6	7	8	9
10 TERM 4 START	11	12	13	14	15 CAMDEN HAVEN SHOW	16 CAMDEN HAVEN SHOW
17	18	19	20	21	22	23
24	25	26	27	28	29	30

WEEDS TO CONTROL THIS MONTH

Effective weed control requires on-going maintenance. Check the boxes and make note of the date when you treat these weeds and repeat every 3 months.

☐

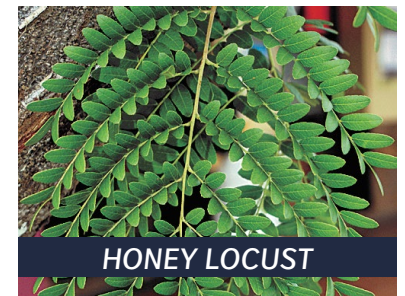
HONEY LOCUST
Treated on this day

☐

COCKSPUR CORAL TREE
Treated on this day

☐

COMMON THORN APPLE
Treated on this day



HONEY LOCUST



GROUND ASPARAGUS

(*Asparagus aethiopicus*)

HOW TO IDENTIFY GROUND ASPARAGUS:

- ▶ Invasive perennial plant with long prickly stems that has an extensive root system and is a prolific seeder
- ▶ Considered to be a widespread weed on the mainland but targeted for eradication on Lord Howe Island
- ▶ Should not be sold, traded, grown or released into the environment

NON-CHEMICAL TREATMENT:

Manually remove the entire crown or corm of the plant (leaving the roots and watery tubers in situ)

CHEMICAL TREATMENT:

Foliar spray with 20mL Glyphosate 360 g/L and 1g Metsulfuron-methyl 600g/kg (e.g. Roundup® and Brushoff®) in 10L water

CONSULT THE PRODUCT LABEL PRIOR TO USING HERBICIDES

Cherry Guava

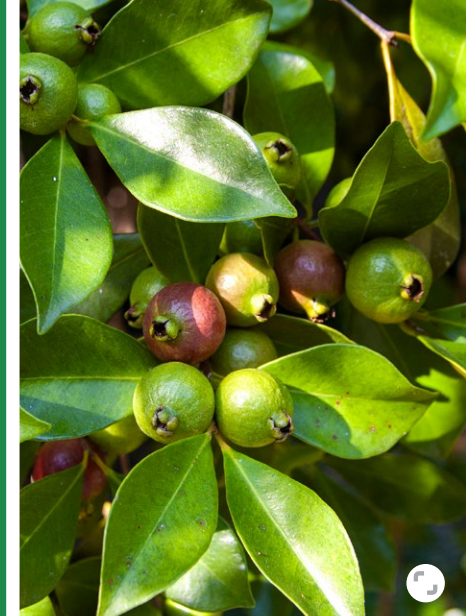
(*Psidium cattleianum*)

NON-CHEMICAL TREATMENT:

Hand-pull seedlings or completely remove trees. Roots left in the soil will re-shoot

CHEMICAL TREATMENT:

Stem inject or cut, scrape and paint the stump with Metsulfuron methyl 1g/L with 1 part Glyphosate 360 g/L (e.g. Roundup®) and 1.5 parts water



Mother of Millions

(*Bryophyllum species*)

NON-CHEMICAL TREATMENT:

Manually remove where appropriate. Ensure all plant material is bagged and removed from the site

CHEMICAL TREATMENT:

Foliar spray with 20mL Glyphosate 360 g/L and 1g Metsulfuron-methyl 600g/kg (e.g. Roundup® and Brushoff®) in 10L water

CONSULT THE PRODUCT LABEL PRIOR TO USING HERBICIDES



For more information download the NSW WeedWise App or contact your local Weeds Officer for FREE advice on weed control methods. See back page for contact details.

NOVEMBER

MON	TUES	WED	THURS	FRI	SAT	SUN
	1 	2	3	4	5	6
7	8 	9	10	11	12	13
14	15	16	17 	18	19	20
21	22	23	24 	25	26	27
28	29	30				

WEEDS TO CONTROL THIS MONTH

Effective weed control requires on-going maintenance. Check the boxes and make note of the date when you treat these weeds and repeat every 3 months.

☐

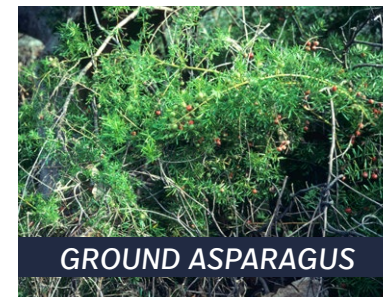
GROUND ASPARAGUS
Treated on this day

☐

CHERRY GUAVA
Treated on this day

☐

MOTHER OF MILLIONS
Treated on this day



GROUND ASPARAGUS

THE MANAGEMENT OF BIOSECURITY RISKS, IS A SHARED RESPONSIBILITY

The North Coast community is responsible for controlling, monitoring, and preventing weeds from causing impacts on their land and neighbouring land across all tenures. All land managers, no matter how they identify, have a legal responsibility to uphold their General Biosecurity Duty and manage weed biosecurity risks.

Cockspur Coral Tree

(*Erythrina crista-galli*)

NON-CHEMICAL TREATMENT:

Mechanically remove large plants and carefully hand-pull seedlings

CHEMICAL TREATMENT:

Basal bark with Starane™ Advanced and diesel. Application rate dependant on the size of the plant. See NSW WeedWise or the herbicide label



Honey Locust

(*Gleditsia triacanthos*)

NON-CHEMICAL TREATMENT:

Mechanically remove the plants and collect all fruit and branches on the ground to ensure they do not re-shoot

CHEMICAL TREATMENT:

Stem inject in a spiral up the trunk of the tree and branches with 1 part Glyphosate 360 g/L (e.g. Roundup®) and 1.5 parts water



For more information download the NSW WeedWise App or contact your local Weeds Officer for FREE advice on weed control methods. See back page for contact details.



DECEMBER

MON	TUES	WED	THURS	FRI	SAT	SUN
			1☾	2	3	4
5	6	7	8○	9	10	11
12	13	14	15	16☾	17	18
19	20	21	22	23●	24	25
	TERM 4 END					CHRISTMAS DAY
26	27	28	29	30☾	31	
BOXING DAY						

WEEDS TO CONTROL THIS MONTH

Effective weed control requires on-going maintenance. Check the boxes and make note of the date when you treat these weeds and repeat every 3 months.

☐

COCKSPUR CORAL TREE
Treated on this day

☐

HONEY LOCUST
Treated on this day



COCKSPUR CORAL TREE



CONTACTS



**PORT MACQUARIE
HASTINGS**

tel: 02 6581 8111
e: council@pmhc.nsw.gov.au



clarence
VALLEY COUNCIL

tel: 02 6643 0200
e: council@clarence.nsw.gov.au



North Coast
Regional
Landcare

tel: 0419 966 278
e: chair@northcoastlandcare.net.au



tel: 02 6568 2555
e: council@nambucca.nsw.gov.au



**BELLINGEN
SHIRE COUNCIL**

tel: 02 6655 7300
e: council@bellingen.nsw.gov.au



ROUS
COUNTY COUNCIL

tel: 6623 3800
e: council@rous.nsw.gov.au



**COFFS HARBOUR
CITY COUNCIL**

tel: 02 6648 4000
e: coffs.council@chcc.nsw.gov.au



Lord Howe
ISLAND BOARD

tel: 02 6563 2066
e: administration@lhib.nsw.gov.au



**KEMPSEY
Shire Council**

tel: 02 6566 3200
e: ksc@kempsey.nsw.gov.au



**WEEDS
ACTION
PROGRAM**