



147°38'0"E 147°40'0"E 147°42'0"E 147°44'0"E 147°46'0"E

31°56'0"S

31°58'0"S

32°0'0"S

32°2'0"S

32°4'0"S

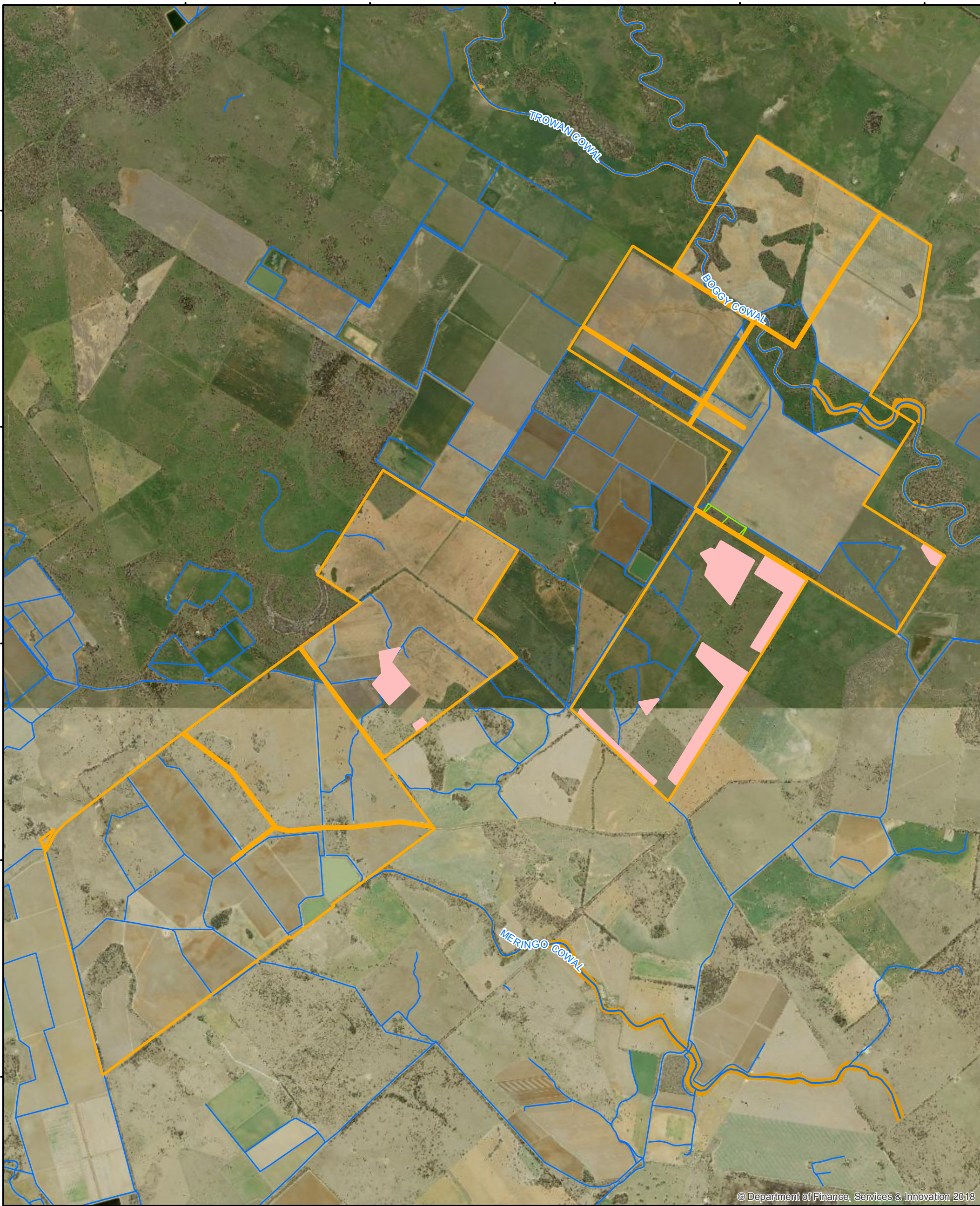
31°56'0"S

31°58'0"S

32°0'0"S

32°2'0"S

32°4'0"S



© Department of Finance, Services & Innovation 2018

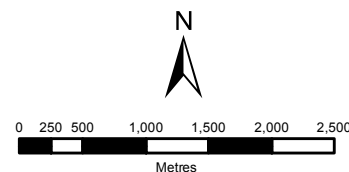
147°38'0"E 147°40'0"E 147°42'0"E 147°44'0"E 147°46'0"E

Legend

- Landholding Boundary
- Excluded Land
- Sensitive Regulated Land
- Vulnerable Regulated Land
- Set Aside Area
- Drainage Line

**Part: 5**  
**Division: 3**  
**Certificate Number: LMC00509**  
**Image Date: 26/08/2013**

Map 1 of 2



**Disclaimer:**  
 Data has been extracted from digitised field information. The State of NSW and Local Land Services and its employees, officers, agents or servants accept no responsibility for the result of any actions taken or the decisions made on the basis of the information, or for any errors, omissions or inaccuracies contained in this map.

**Sources:**  
 Map created by Local Land Services. Base topographic data supplied by the © NSW Department of Finance and Services.  
 Reference data © NSW Office of Environment and Heritage.

**Projection:** Geographic Coordinate System  
**Datum:** Geocentric Datum of Australia 1994  
 © Copyright New South Wales Government  
 All Rights Reserved  
 No part of this map may be reproduced without written permission

