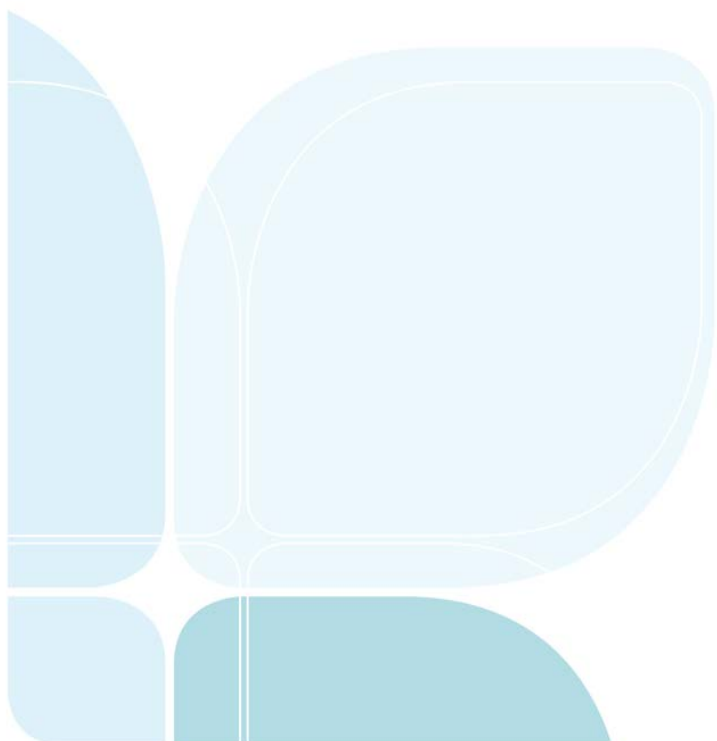




**Local Land  
Services**  
Western

# **ANNUAL REPORT**

Prepared by the Western Local Board  
1 January 2014 – 31 December 2014





Published by the Western Local Board

First published April 2015

ISBN 978-1-74256-737-2

**Disclaimer**

The information contained in this publication is based on knowledge and understanding at the time of the report January 2014 to December 2014. However, users are reminded of the need to ensure that information upon which they rely is up to date and to check currency of the information with the appropriate officer of Local Land Services or the user's independent adviser.

© State of New South Wales through Local Land Services 2015.

## Chairperson Foreword

It is a privilege to be able to serve the Local Land Services Western Region as Chair of the Western Local Board and to be presenting our inaugural annual report.

Local Land Services was established to provide integrated and coordinated services to landholders and the community to improve biosecurity, agricultural production, emergency management and natural resource management.

A significant challenge for the stakeholders in our region has been the drought, which has caused an increased biosecurity risk through larger populations of wild dogs and feral pigs. Assistance in controlling these risks came in the form of a \$600,000 grant from the Federal Government. This was partly spent in 2014 and the remainder will be used in eradication programs starting in May 2015. Without the support of the local people in the region, the on-ground delivery of these programs would not have been a success.

During the year the Board's main focus was the pest eradication program, delivery of grant funding, organisational realignment, the development of the Local Community Advisory Groups and Local Aboriginal Community Advisory Groups. Although a number of these functions have not been finalised, significant progress has been made to ensure they are finalised in 2015.

The organisation realignment will see the creation of three regional Community Service Delivery teams, which will each have a Community Manager and service staff. In addition, a unit of technical and business advisors will support the whole region. The aim of the organisation realignment is to implement the one-stop-shop regional model of service delivery envisaged and enacted by our State Parliament.

It has been a difficult year for both the Board and the staff and I thank the Board members for their dedication and hard work in their Board, committee and community roles. I also thank the staff for their continued performance of their roles and functions during the trying times associated with the formation of a new organisation and the ongoing realignment of this organisation.

With the help of our six advisory groups, the Board and the organisation will be able to keep in touch with the views of our local communities and keep focused on the issues that are affecting our customers.

*Tom Hynes, Chair, Western Local Board*



Western Local Board: (L-R) Robert Wason, Urie Point, Brewarrina; Tom Hynes (Chair), Broken Hill; Ben Barlow, One Tree Plain, north of Hay; Andrew Mosely, Etiwanda Station, Cobar; Sally Bright, Mount Wooolahra Station, north-west of Broken Hill; Justin McClure, Kallara Station, Tilpa; Marie Russell, Old Budda Station, Tilpa; Neill Leigo, Allundy Station near Wanaaring; Jim Maynard, Kerribee Station near Euston.

## About Local Land Services

Local Land Services (LLS) brings together agricultural production advice, biosecurity, natural resource management and emergency management into a single organisation. Eleven LLS regions, managed by 11 local boards cover NSW: Central Tablelands; Central West; Greater Sydney; Hunter; Murray; North Coast; Northern Tablelands; North West; Riverina; South East; and Western regions.

Each region is accountable for delivering services that add value to local industries, enhance natural resources, protect industries from pests and disease and help communities respond to emergencies like flood, fire and drought.

Local boards headed by local chairs work closely with farmers, landholders and communities. Each region will develop operational management plans that will prioritise service delivery on a regional basis, reflecting regional priorities.

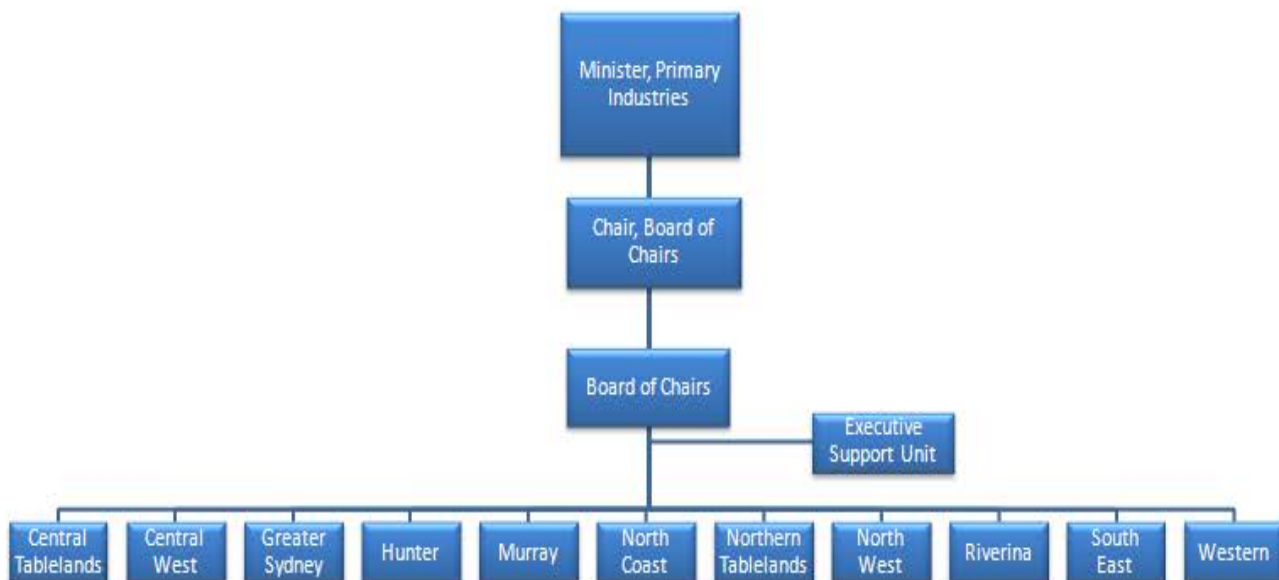
All the local chairs together form the Local Land Services Board of Chairs, which is chaired by John Macarthur-Stanham.

Local Land Services boards are accountable for:

- administering and delivering local land services
- developing and implementing appropriate governance arrangements for the delivery of local land services
- preparing a state strategic plan and local strategic plans
- providing and facilitating education and training in connection with agricultural production, biosecurity, natural resource management and emergency management
- making recommendations regarding rates, levies and contributions on rateable and other land
- providing and administering grants, loans, subsidies or other financial assistance for local land services
- communicating, consulting and engaging with the community, including the Aboriginal community, to encourage participation in the delivery of local land services.

The regions and the Board of Chairs are supported by a small Executive Support Unit (ESU), located primarily at Dubbo. ESU seeks to provide Local Land Services with operational leverage and administrative and policy consistency, while respecting regional decision making and accountability.

## Organisational Chart



## Our Region

The Western Local Region is the largest Local Land Services region in NSW, covering about 40 per cent of the state. Despite its size, it is the least densely populated region, with approximately 42,873 people.

The Western Local Region encompasses one of the most diverse rangeland areas in Australia, comprised of arid and semi-arid land. The southern and eastern parts of the region are used for intensive agricultural practices.

Grazing (sheep, cattle, goats), dryland and irrigated cropping, horticulture and viticulture, mining and nature conservation are key activities within the Western Local Region.

Coordinated biosecurity programs are undertaken to control pests such as feral goats, rabbits, feral pigs, foxes and wild dogs and monitor for animal diseases that affect herd and flock productivity.

If you are a landholder in Balranald, upper Bogan, Bourke, Brewarrina, Broken Hill, upper Carathool, Central Darling, Cobar, upper Hay or Wentworth local government areas, the Western Local Region provides all your local land service needs.



## Contact Us

The Western Local Region has staff at 12 locations. Call 1300 795 299 to contact your Local Land Service office from Monday to Friday during business hours.

Website: [www.western.lls.nsw.gov.au](http://www.western.lls.nsw.gov.au) Email: [admin.western@lls.nsw.gov.au](mailto:admin.western@lls.nsw.gov.au)

## Senior Staff 2014

	General Manager	Program Managers	Manager of Strategic Planning & Partnerships	Business & Finance Manager	Manager of Biosecurity
<b>Name</b>	Rob Gregory	Russell Grant Leigh Pyke	Erlina Compton	Narelle Heard	David Creeper
<b>Location</b>	Buronga	Cobar Buronga	Dubbo	Buronga	Broken Hill
<b>Contact</b>	03 5021 9460	02 6836 1575 03 5021 9460	02 6881 3404	03 5021 9460	08 8087 3378

## Governance

Board Member	Phone	Mobile	Email	Town
<b>Tom Hynes (Chair)</b>	08 8088 7275	0438 887 275	tomhynes5@bigpond.com	Broken Hill
<b>Ben Barlow</b>	02 6993 8198	0429 967 217	ulongagrazing@activ8.net.au	Hay
<b>Sally Bright</b>	08 8091 2590	0427 421 437	themount155@bigpond.com	Via Broken Hill
<b>Neill Leigo</b>	02 6874 7637	0448 547 637	allundy@bigpond.com	White Cliffs
<b>Jim Maynard</b>	03 5024 0248	0427 240 248	maynardmj@bigpond.com	Via Mildura
<b>Justin McClure</b>	02 6837 3964	0427 373 964	jj@kallarastation.com.au	Tilpa
<b>Andrew Mosely</b>	02 6837 3797	0419 477 983	info@etiwanda.com.au	Cobar
<b>Marie Russell</b>	02 6837 3717	0417 271 773	m.l.russell@bigpond.com	Tilpa
<b>Robert Wason</b>	02 6874 4994	0417 484 529	uriepoin2839@gmail.com	Brewarrina

## Board Meeting Attendance

LLS	Name of Board Member	Number of Possible Meetings	Number of Meetings Attended
Western	Tom Hynes	10	10
	Ben Barlow	10	8
	Sally Bright	8	6
	Neill Leigo	8	7
	Jim Maynard	10	7
	Justin McClure	10	9
	Andrew Mosely	8	8
	Marie Russell	10	7
	Robert Wason	8	7

## Local Community Advisory Groups

Local Community Advisory Groups provide input into the development of plans, projects and services and are an integral link between Local Land Services and the community it serves. All Local Land Services regions have set up, or are in the process of setting up, community advisory groups. In the Western Local Region, six advisory groups will be established during 2015.

### Western Local Community Advisory Groups

**Purpose/focus:** The Western Local Board Local Community Advisory Groups are designed to assist the Western Local Board and management on the direction of the Organisation's direction and programs. The goals of the groups are to:

- Provide input into the development of local strategic plans
- Seek input from customers during project planning and development phases
- Seek input from customers on the range of services to be provided
- Provide a forum for focussed and sustained discussion with customers
- Provide a conduit between the Western Local Board and customers on the issues that need to be addressed by Western Local Land Services
- Seek input about the issues important to the customer.

**Selection process:** Expressions of interest were called to form these groups.

#### Membership/group details:

- Broken Hill, Tibooburra and Wilcannia - chaired by Louise Turner of "Goodwood Station," White Cliffs
- Cobar, Bourke, Brewarrina and Wanaaring - chaired by Stuart Mosely of "Manuka," Cobar
- Balranald, Wentworth, Hillston and Ivanhoe - chaired by Angus Whyte "Wyndham Station" Wentworth.

**Meeting details:** There will be a minimum of three meetings per calendar year.

### Western Aboriginal Community Advisory Groups

**Purpose/focus:** The Western Local Board Aboriginal Community Advisory Groups are designed to assist the Western Local Board and management on the direction of the Organisation's direction and programs. The goals of the groups are to:

- Provide input into the development of local strategic plan
- Seek input from Aboriginal communities during project planning and development phases
- Seek input from Aboriginal communities on the range of services to be provided
- Provide a forum for focussed and sustained discussion with Aboriginal communities
- Provide a conduit between the Western Local Board and Aboriginal communities on the issues that need to be addressed by Local Land Services Western Region
- Seek input about the issues important to Aboriginal communities in relation to Local Land Services.

**Selection process:** Expressions of interest were called to form these groups.

**Group details:** There will be three groups, covering

- Broken Hill, Tibooburra and Wilcannia
- Cobar, Bourke, Brewarrina and Wanaaring
- Balranald, Wentworth, Hillston and Ivanhoe.

**Meeting details:** There will be a minimum of three meetings per calendar year.

## Key Achievements

Protect, Manage and Conserve Land, Biodiversity and Native Vegetation	
Measure	Achieved
Number of conservation covenants or other agreements attached to title negotiated	3
Area (ha) protected	28,900
Number of voluntary conservation agreements negotiated	57
Area (ha) protected	196,300
Area (ha) of terrestrial native vegetation enhanced/rehabilitated	210,400
Area (ha) of terrestrial native vegetation protected by fencing	209,000
Area (ha) planted to terrestrial native species	684
Area (ha) of pest plant control measures implemented	6,727
Area (ha) of land treated and/or protected from soil erosion by engineering works	684
Area (ha) of land managed for sustainable grazing	205,000

Community Involvement and Support	
Measure	Achieved
Number of awareness raising events such as demonstrations, field days or study tours conducted	41
Number of participants who attended in days	2769
Number of written products such as brochures, newsletters, posters or fact sheets developed	158
Estimated number of recipients	39,537
Number of media releases	36
Number of training sessions, workshops, seminars or other skills and training events conducted	36
Number of participants in person in days	300
Number of community groups OR projects assisted	67
Number of activities undertaken to support community groups	1313

Protect Rivers, Wetlands And Coastal Environments	
Measure	Achieved
Area (ha) of riparian native vegetation protected by fencing	6,727
Streambank length (km) of riparian vegetation protected	77
Number of off-stream (alternative) watering sites installed	12
Length (km) of streambank protected from stock	77



## Animal Biosecurity & Welfare

### Successful management of emergency animal diseases (EADs)

During 2014 all Local Land Services regions successfully worked with Department of Primary Industries to minimise the impacts of EADs on trade, production, the environment and public health and wellbeing. This was achieved through:

- Emergency animal disease Investigations
- Preparing for and responding to EAD Incidents
- Inspecting piggeries for swill feeding
- Submitting brains from suitable cases to exclude Transmissible Spongiform Encephalopathy (BSE and scrapie).

Measure	Achieved
Number of investigations to exclude an EAD	1
Number of training exercises conducted by region	0
Number of staff that participated in a EAD response during 2014	6
Percentage of (at risk) pig properties inspected for swill feeding in last years	0
Number of sudden death investigations to exclude anthrax	1
Number of Anthrax incidents managed	1
Number of cattle and sheep brains collected and submitted to exclude TSE	0



On the corner at Copi by Claudia Johnston, 2014 Local Land Services Western Region Photo Competition – Secondary Student, Highly Commended.

### Improving market access for NSW livestock and products, supported by adequate and relevant surveillance information

During 2014 all Local Land Services regions successfully worked with Department of Primary Industries to ensure market access for NSW was supported by adequate and relevant surveillance information. This was achieved through:

- A network of District Veterinarians and Biosecurity Officers undertaking disease investigations to maximise likelihood of early detection of notifiable exotic and endemic diseases
- Managing Property Identification Codes for all holdings with stock
- Certifying holdings to enable live exports
- Entering surveillance events in the electronic Livestock Health Management System
- Submitting articles (case reports) to the DPI-LLS Animal Health Surveillance News
- Sampling sentinel herds and managing light traps as part of the National Arbovirus Monitoring Program (NAMP)
- Regional surveillance projects
- Saleyard inspections.

Measure	Achieved
Number of District Veterinarians (as at 31 Dec 2014)	N/A (District Veterinarians are employed by DPI)
Number of specialist Animal Biosecurity Officers (as at 31 Dec 2014)	3 EFT
Number of disease investigations: visits	10
Number of disease investigations: telephone	50
Total number of PICs	1869
Total number of active PICs	1711
Number of NAMP sentinel herds	2
Number of NAMP light traps	1
Number of regional surveillance projects	1

### Animal welfare standards are effectively managed to allow market access and meet community expectations

During 2014 all Local Land Services regions successfully worked with DPI to ensure the welfare of stock grazing on rated land meets community and industry expectations and allows market access for NSW products. This was achieved through:

- District Veterinarians and Livestock Officers, at the request of the RSPCA, providing advice to stock managers and enforcement agencies in “failure to feed” cases under *the Prevention of Cruelty to Animals Act*.
- Animal welfare is effectively managed in incidents and emergencies (including flood and fire).

Measure	Achieved
Number of ‘failure to feed’ cases attended	1
Number of incidents and emergencies requiring animal welfare management	1

## The negatives impacts of established diseases and pest of animal are minimised in NSW

During 2014 all Local Land Services regions successfully worked with DPI to assist industry to manage the priority diseases that exist in NSW. This was achieved through the delivery of the following endemic disease programs:

- Maintaining all of NSW a Footrot Protected Area - NSW Footrot control program
- Maintaining the NSW Beef herd's Bovine Johne's disease (BJD) Protected Area Status - National BJD program
- Supporting producer groups to form regional biosecurity groups to manage and prevent the spread of Ovine Johne's disease (OJD) into areas with low rates – OJD management program
- Cattle Tick and Tick Fever
- NSW Sheep Lice Program
- Cysticercus bovis
- Other notifiable disease investigations and management.

Measure	Achieved
Total number of lameness investigations to exclude sheep footrot	0
Number of footrot infected flocks under management to eradicate footrot during 2014	0
Number disease investigations to exclude BJD	0
Number of BJD traces investigated	0
Number of BJD infected herds under property disease management plans	0
Number of OJD Regional Biosecurity Areas	2
Number of producers provided with advice on sheep lice control	130
Number of Cysticercus bovis field investigations	0

\* There were no recorded outbreaks of endemic diseases in the Western Local Region.

**NSW manages residue or contaminant risks in livestock production and significant zoonotic risks from animal diseases**

During 2014 all Local Land Services regions successfully worked with DPI to ensure:

- trade is not disrupted by residues or contaminants in livestock or livestock products
- human health is not at risk from contaminants and
- people are safeguarded from significant animal diseases that also affect humans (ie zoonoses).
- This was ensured by:
- Prompt investigation of all residue cases originating the from National Residue Survey
- Property management plans (PMPs) for all properties with residue contamination with grazing animals.
- Delivery of the National Organochlorine Management Program
- Management of lead and other toxicity cases with residue implications
- Liaison with NSW Public Health Units to ensure knowledge of any zoonotic incidents are shared between the organisations
- Investigation of any relevant wildlife or feral animal diseases.

Measure	Achieved
Number of Organochlorine Management and other trace back residue investigations	0
Number of holdings with current OC and other residues Property Management Plans	0
Number of lead and other toxicity cases managed	0
Number of disease events referred to Public Health Unit	1



Mother Earth by Laura Gurney, 2014 Local Land Services Western Region Photo Competition - Open Colour, Winner.

## Invasive Species

Local Land Services has responsibility to lead the coordination of strategic control programs in regions where invasive species threaten Biosecurity.

The key focus of the work is aimed at reducing the impact of endemic species (i.e. declared) and prioritising the exclusion or eradication of emerging and new species. LLS achieves this work through collaboration and where necessary compliance and enforcement services with landholders and local, state and commonwealth stakeholders who all share responsibility and the benefits for managing invasive species.

### Exclude Prevent the establishment of new invasive species

Measure	Achieved
Number of identified high risk locations for the establishment of new invasive species	23
Number of surveillance programs aimed at detecting new invasive species from high risk locations	2
Number of new invasive species identified	0

### Eradicate or contain eliminate, or prevent the spread of new invasive species eg deer

Measure	Achieved
Number of control programs targeting new or emerging invasive species	2
LLS full time equivalent positions supporting the eradication or control of new or emerging invasive species	9.6
Number of holdings consulted for the management of new or emerging invasive species	19
Number of holdings participating with control programs for new or emerging invasive species	15

### Effectively manage reduce the impacts of widespread invasive species i.e.; wild pigs, rabbits, foxes , dogs and plague locusts

Measure (Wild Dogs)	Achieved
Number of holdings baiting for wild dogs	234 holdings, inc 130 baiting on multiple occasions 7,426,127 ha 289,846 baits
Number of integrated aerial baiting programs for wild dogs	2
LLS full time equivalent positions supporting wild dog management (control and coordination)	3
LLS financial resources committed to wild dog management	\$360,000

Measure (Foxes)	Achieved
Number of holdings baiting for foxes	252 holdings, inc 61 baiting on multiple occasions 3, 667,953 ha 111,208 baits
Measure (Rabbits)	Achieved
Number of holdings baiting for rabbits	2 holdings 83,928 ha 4,514 baits
Measure (Feral Pigs)	Achieved
Number of holdings baiting for feral pigs	3 holdings 317,480 ha 4,222 baits
Measure (Other LLS Activities)	Achieved
Number of property compliance inspections undertaken to complement proactive and compliant land managers	6
LLS full-time equivalent positions committed to managing invasive species	7.4

Capacity ensure NSW has the ability and commitment to manage invasive species	
Measure	Achieved
Number of new strategic management plans implemented	0
Number of existing strategic plans reviewed	0

<b>Emergency Response</b>	
<p>Local Land Services has a responsibility to provide emergency management roles in prevention, preparedness, response and recovery for biosecurity emergencies and natural disasters.</p> <p>LLS is a supporting government agency under the Agriculture and Animal Services Function Area (AASFA), so it must ensure that resources of LLS are available during a natural disaster or biosecurity emergency.</p> <p>The AASFA allocates the responsibilities for emergency management and the measures below reflect those responsibilities.</p>	
<b>Prevention Building capacity in the community to minimise the impacts of emergencies on agriculture and animals</b>	
Measure	Achieved
Number of regional industry <u>strategies</u> that LLS has been involved with that assists with prevention and/or building capacity to minimise the impacts of emergencies on agriculture and animals.	0
Number of regional industry <u>groups</u> that LLS has been involved with that assists with prevention and/or building capacity to minimise the impacts of emergencies on agriculture and animals.	1
<b>Preparation Building capacity in LLS and the community to prepare for and reduce the impact of emergencies affecting agriculture and animals.</b>	
Measure	Achieved
% of staff identified in the regional Emergency Response Team that are trained to the applied level.	37.5
Number of LLS staff that have been trained to the introduction level	33%
Number of LLS staff that have been trained to the applied level	3
Number of LLS staff that have been trained beyond the applied level	0
<b>Response Ensuring an effective, coordinated response to emergencies impacting on agriculture and animals</b>	
Measure	Achieved
Number of estimated working days devoted to emergency responses	20
List of emergency responses participated in	Gol Gol Storm
<b>Recovery helping communities recover from the impacts of an emergency affecting agriculture and animals</b>	
Measure	Achieved
Number of natural disaster response reports that have been prepared and submitted to the Regional Director	2
Number (and location) of natural disaster declarations that have been made as a result of LLS preparing natural disaster reports	1 Gol Gol

Plant Biosecurity	
Prevention – There will be no introductions into the region of any plant biosecurity issues	
Measure	Achieved
LLS field personnel trained for surveillance activities	Introductory training for biosecurity staff in each region
Early detection – Any plant biosecurity incursions into the region are immediately identified and reported	
Measure	Achieved
Receive training in emergency management and response procedures	Incident Management Team identified in each region and trained in emergency management and response procedures
Field personnel trained for Emergency Plant pest surveillance activities	Field personnel have been trained by DPI Plant Biosecurity in LLS regions where surveillance programs have been carried out
Surveillance results reported to Plant Biosecurity	Field personnel have reported surveillance activity to DPI Plant Biosecurity in LLS regions where surveillance programs have been carried out for Cucumber Mosaic Mottle Virus surveillance
Containment and eradication – All plant biosecurity incursions are contained and eradicated	
Measure	Achieved
Field personnel trained for Emergency Plant pest surveillance activities	Field personnel have been trained by DPI Plant Biosecurity in LLS regions where surveillance programs have been carried out
Transition to management	
Measure	Achieved
Action transition to management projects including recovery	Nil requirement due to no plant biosecurity incursions across the state for the reporting period
Effective management of established pests and diseases	
Measure	Achieved
Promotion of practices to prevent spread	Plant Biosecurity information provided at local field days and events to producer groups and industry