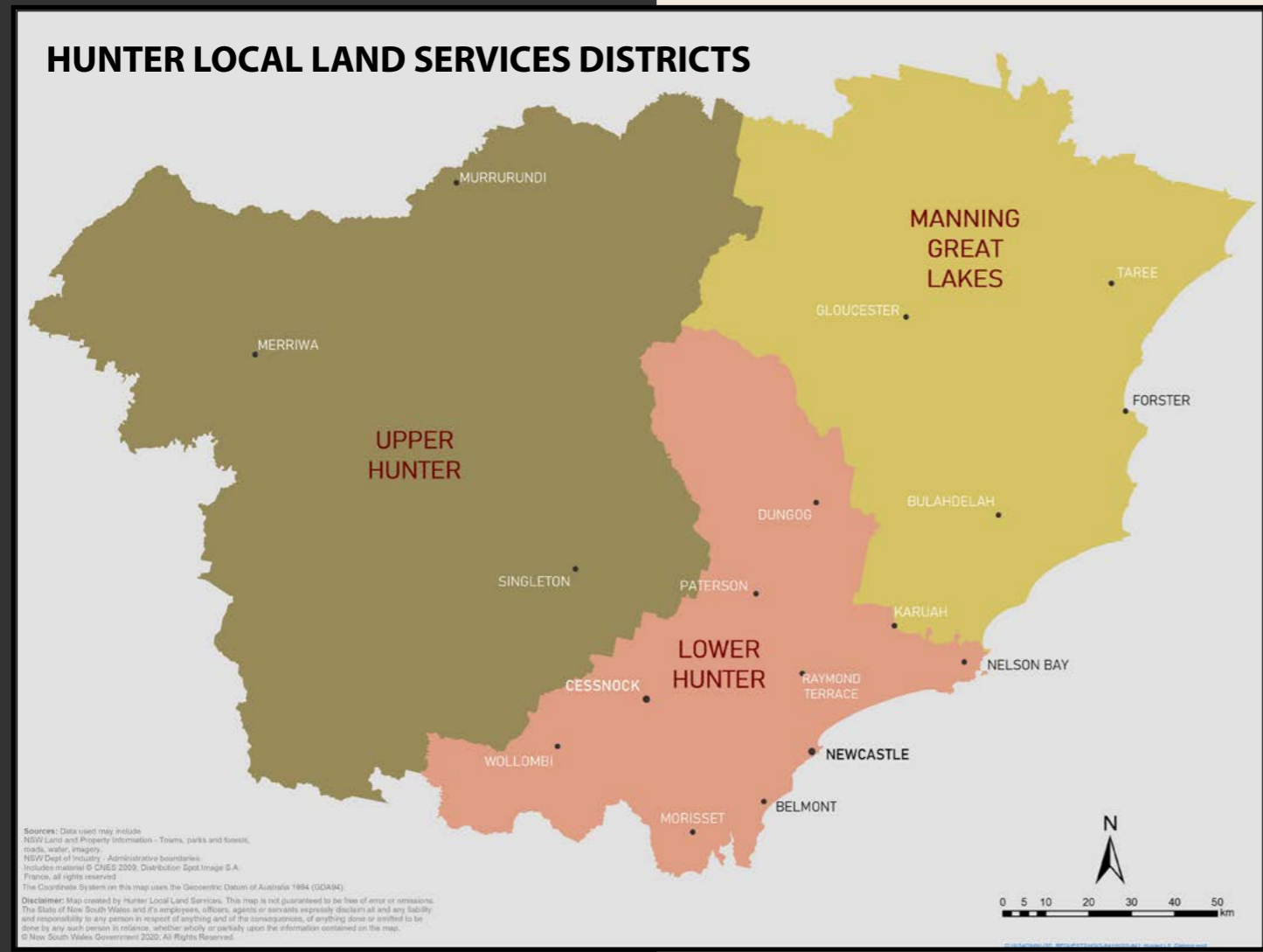
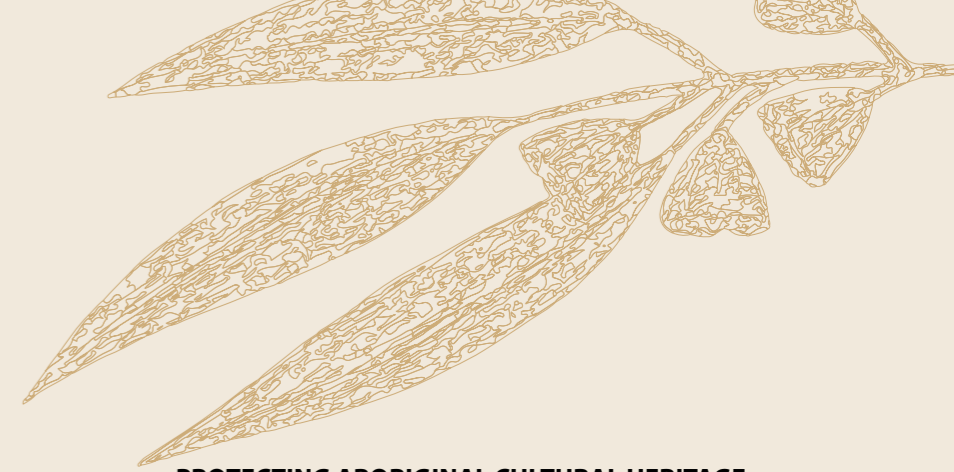


# FINDING OUT MORE



**Hunter Local Land Services** .....Ph: 1300 795 299  
 Check out our website for videos of cultural burns  
[www.lls.nsw.gov.au/regions/hunter](http://www.lls.nsw.gov.au/regions/hunter)  
**NSW Aboriginal Land Council**.....Ph: 9689 4444



**UPPER HUNTER LALCs**  
 Wanaruah LALC..... Ph: 6543 1288  
**Other Aboriginal Organisations**  
 Wonnarua Nation .....Ph: 6571 8595

**MANNING GREAT LAKES LALCs**  
 Purfleet/Taree LALC .....Ph: 6552 4106  
 Forster LALC ..... Ph: 6555 5411  
**Other Aboriginal Organisations**  
 Taree Indigenous Development and Employment (TIDE)..... Ph: 6552 3652

**LOWER HUNTER LALCs**  
 Karuah LALC ..... Ph: 4997 5733  
 Worimi LALC ..... Ph: 4033 8800  
 Mindaribba LALC..... Ph: 4015 7000  
 Awabakal LALC ..... Ph: 4965 4532  
 Biraban LALC ..... Ph: 4959 1829  
 Bahtabah LALC ..... Ph: 4971 4800

**Other Aboriginal Organisations**  
 Awabakal Descendants Traditional Owners Aboriginal Corporation ..... Ph: 0405 149 684  
 Awabakal Traditional Owners Aboriginal Corporation ..... Ph: 0412 866 357

**NEIGHBOURING LALCs**  
 Bathurst LALC ..... Ph: 6332 6835  
 Birpai LALC..... Ph: 6584 9066  
 Darkinjung LALC..... Ph: 4351 2930  
 Metropolitan LALC..... Ph: 8394 9666  
 Mudgee LALC ..... Ph: 6372 3511  
 Nungaroo LALC..... Ph: 6746 2356  
 Walhallow LALC ..... Ph: 0428 463 578

**PROTECTING ABORIGINAL CULTURAL HERITAGE**  
 NSW EES Environment Line .....Ph: 131 555  
 EES Heritage Office .....Ph: 9873 8500

**LIST OF REGISTERS**  
**EES AHIMS Register**  
<https://www.environment.nsw.gov.au/awssapp/Login.aspx>  
**Australian Heritage Database**  
<http://www.environment.gov.au/heritage/publications/australian-heritage-database>  
**State Heritage Inventory and Register**  
<https://www.environment.nsw.gov.au/heritageapp/heritagesearch.aspx>  
**Local Government Area Local Environmental Plan**  
<http://www.legislation.nsw.gov.au>



**AHIMS Site Recording 4+**  
 NSW Office of Environment and Heritage