

North Coast Local Land Services: 2020-21 Dashboard

A THRIVING BUSINESS WITH FOCUSED PASSIONATE PEOPLE

CUSTOMER SERVICE

IN THE LAST 12 MONTHS Our priority this year was to provide timely customer service that enabled community to respond to the ongoing pressures imposed by drought and fire recovery, floods and the covid-19 pandemic.

>7,800 ANSWERED 1300 PHONE CALLS

92% SATISFACTION RATING

>1,200 COUNTER ENQUIRIES

ISSUED 350 PROPERTY IDENTIFICATION CODES

PROCESSED >440 ONLINE ENQUIRIES

COMMUNITY ENGAGEMENT

2,877 FACEBOOK FOLLOWERS

4 SEASONAL NEWSLETTERS

211,776 PEOPLE REACHED ON FACEBOOK

317 FACEBOOK POSTS

32 LAND MANAGEMENT PODCASTS AND WEBINARS

WE ACHIEVED ALL THIS WITH...

Our people \$23,974,484 TOTAL EXPENDITURE

TOTAL OF 73 EMPLOYEES

21,730 RATE PAYERS

LANDSCAPE MANAGEMENT

LORD HOWE ISLAND LITTLE MOUNTAIN PALM

118 HABITAT HA IMPROVED

1 POPULATION MAINTAINED

118 HA WEED MANAGEMENT

1 COMMUNITY GROUP SUPPORTED

World Heritage species and communities were protected by managing weeds and building community biosecurity capacity.

GONDWANA RAINFOREST WORLD HERITAGE AREAS

155 HA HABITAT RESTORED

4 AWARENESS RAISING EVENT

155 HA WEED MANAGED

9 SITES REHABILITATED / PROTECTED

Border and Gibraltar Ranges values were protected by managing Bell Miner Associated Dieback on adjoining private lands and building land management capacity.

THREATENED SPECIES AND ECOLOGICAL COMMUNITIES

7 SITES REHABILITATED AND PROTECTED

Key species and ecological communities managed include Eastern Bristle Bird, Hasting River Mouse, Rufous Scrub-Bird, Lord Howe Island Little Mountain Palm, Bellingen River Snapping Turtle, Koala, Upper Coldstream Biodiversity Hotspot, Coastal Floodplain Communities.

215 HA HABITAT IMPROVED / PROTECTED

85 OF HA SIGNIFICANT SPECIES / ECOLOGICAL COMMUNITIES ENHANCED / PROTECTED

140 HA WEEDS MANAGED

Caring for Country involved the Coffs Harbour LALC, Madhima Gulgan Assoc, Githabul Rangers and Yaegl Group.

TRAVELLING STOCK RESERVES

5+ KM FENCING REPAIRED FOR STOCK MANAGEMENT

96 APIARY PERMITS

191 GRAZING PERMITS

8,767 HA OCCUPIED BY TSR

696 HA WEED MANAGEMENT IN HIGH CONSERVATION AREAS

BIOSECURITY

PEST ANIMALS

WILD DOGS 1,081 SIGHTINGS

382 LIVESTOCK KILLED AND MAIMED ON 152 PROPERTIES

16,353 ON GROUND BAITS

14,766 AERIAL BAITS

179 CONTROL PROGRAMS ON 772 PROPERTIES

620,607 HA OF WILD DOG CONTROL ON PRIVATE AND FORESTRY COMMISSION LAND

Pest management continued throughout the year in spite of difficulties presented by the ongoing impacts of drought, fire and Covid.

WILD DEER 38 PROPERTIES MANAGED

FERAL PIGS 41 PROPERTIES MANAGED

FOX 63 PROPERTIES MANAGED

FERAL CATS 50 HA OF CONTROL

CANE TOADS 10,716 CONTROLLED

4,005 HA SURVEYED / CONTROLLED

62 SURVEYED / CONTROLLED
16 INDIGENOUS RANGERS EMPLOYED

PERI-URBAN - SMALL LAND HOLDINGS

4 AWARENESS RAISING EVENTS

6 COMMUNITY CAPACITY BUILDING EVENTS

2 TRAINING EVENT

8 COMMUNITY GROUPS SUPPORTED

Engagement with peri-urban landholders focussed on creating networks to promote best practice land management

ANIMAL BIOSECURITY AND WELFARE

397 ANIMAL HEALTH INVESTIGATIONS

5 ANIMAL WELFARE INVESTIGATIONS

19 AWARENESS RAISING EVENTS

980 REGULATORY ACTIVITIES

71 LIVE ANIMAL EXPORT CERTIFICATES

Improved adoption through training and advice has protected markets

WEEDS

38,786 HA WEED MANAGEMENT

24 COMMUNITY GROUPS SUPPORTED

12,224 LANDHOLDER CONSULTATIONS ON HIGH RISK SPECIES

36 STAKEHOLDER PARTNERSHIPS AND PROJECTS

14 AWARENESS RAISING EVENTS

35 TRAINING EVENTS

The success of the weed program was largely due to the ongoing commitment of the North Coast councils and Weed Biosecurity Officers to the Weed Action Program along with the delivery of bushfire related funding programs.

PLANT BIOSECURITY

180 DAYS OF SURVEILLANCE

2 FALL ARMYWORM WORKSHOPS

1 PODCAST

PRIMARY PRODUCTION

SUSTAINABLE AGRICULTURE

19 AWARENESS RAISING EVENTS

1,382 TAILORED ADVICE PROVIDED TO PRODUCERS

36 WOMEN ATTENDING 4 TRAINING EVENTS FOR THE 'WOMEN ON THE LAND' PROJECT

5 WEBINARS

8 PROJECTS \$13,504,406

7 YOUTUBE CLIPS

195 PROPERTIES RECEIVED FUNDS TO REPAIR /IMPROVE STOCK WATER INFRASTRUCTURE

5 PODCASTS

448 HA OF SOIL IMPROVEMENT

TOP 5 FACEBOOK POSTS:

1. STOCK WATER GRANTS

2. MULTI-COLOURED ASIAN LADY BEETLE

3. ALL ABOUT SOILS WEBINAR

4. CLEAN COASTAL CATCHMENTS GRANTS

5. PASTURE RECOVERY AFTER FLOOD

50 FACEBOOK POSTS

85% CATTLE (BEEF, DAIRY)

8% HORTICULTURE

7% CROPPING

114,332 PEOPLE REACHED

EMERGENCY MANAGEMENT

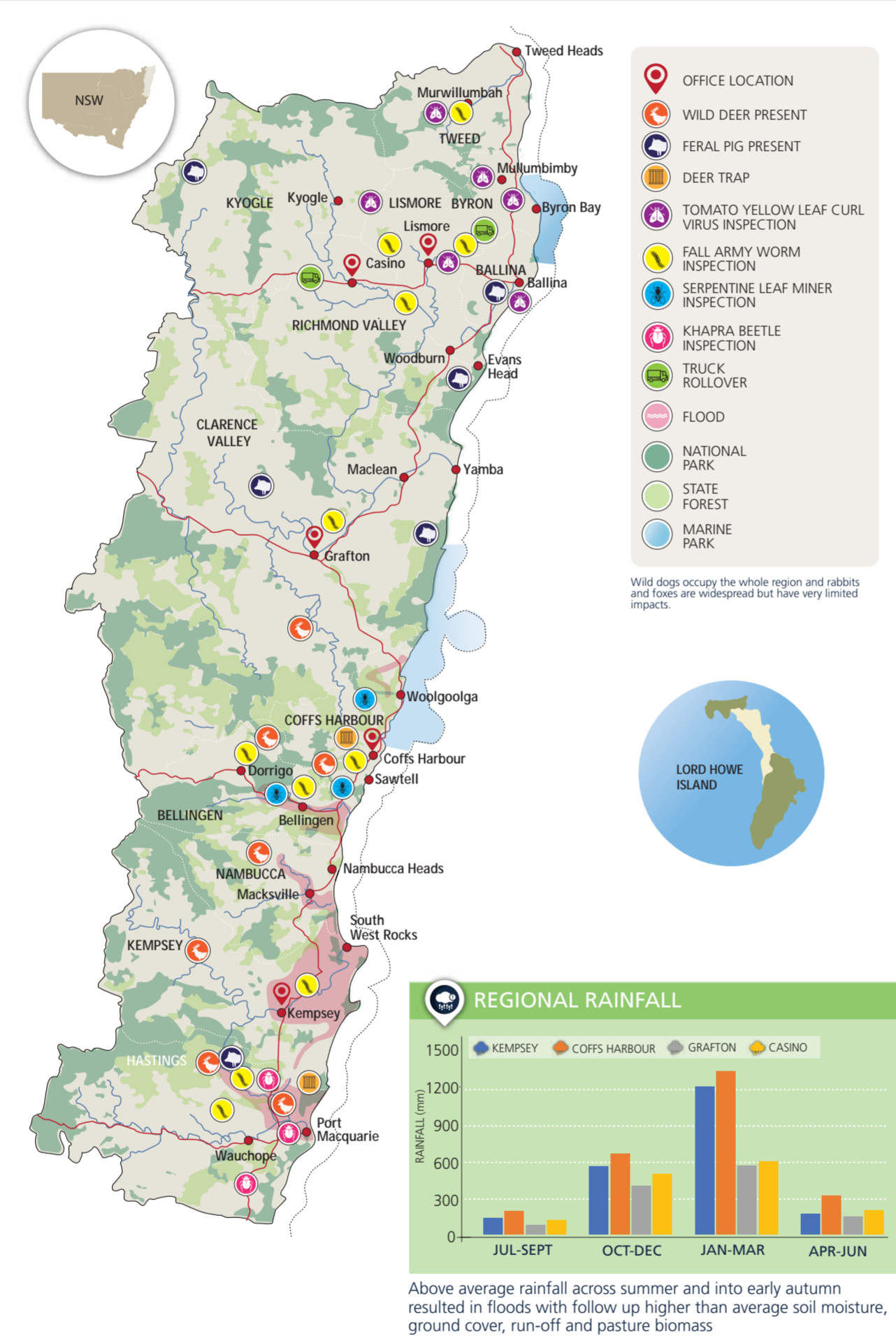
100% RESPONSE TO ALL REGIONAL INCIDENTS

89% OF STAFF TRAINED IN EMERGENCY MANAGEMENT

3 PREPARATORY EXERCISES

76% STAFF GAINED EXPERIENCE IN EMERGENCY MANAGEMENT

28 EMERGENCY MANAGEMENT COMMITTEE MEETINGS ATTENDED



LAND MANAGEMENT

556 CUSTOMER ENQUIRIES

83 SITE VISITS

108 HA SET ASIDE FOR BIODIVERSITY CONSERVATION

14 CERTIFICATES ISSUED FOR NATIVE VEGETATION CLEARING

363 HA TREATMENT AREA MANAGED FOR IMPROVED AGRICULTURAL PRODUCTION

Our land management activities involved native vegetation clearance certification and the promotion of best practice management, to deliver production and biodiversity conservation outcomes.

NRM ADVISORY, SUPPORT AND REFERRAL SERVICES

2 STAKEHOLDER PARTNERSHIPS

4 STAKEHOLDER WORKING GROUPS DEVELOPED

4 AWARENESS RAISING EVENTS

2 REGIONAL PLANS IMPLEMENTED

Advisory services focussed on capacity building, weed, pest and fire management, and native vegetation and riparian zone management.

RICHMOND WATERWAY

MARINE ESTATE PROJECT 5 KM STREAM LENGTH REHABILITATED / ENHANCED

11 HA INCREASE IN NATIVE VEGETATION CONDITION

11 HA OF NATIVE VEGETATION ENHANCED / PROTECTED

760 M OF RIVER-BANK STABILISATION

3 ROADS IMPROVED TO MANAGE SOIL LOSS

2.9 HA INCREASE IN NATIVE VEGETATION EXTENT

Projects focussed on improving riparian vegetation, on-farm soil health and decreasing diffuse source pollution inputs, to improve water quality for the marine estate.

CLARENCE WATERWAY

3 KM OF STREAM LENGTH ENHANCED

2.7 HA INCREASE IN NATIVE VEGETATION EXTENT

51 HA NATIVE VEGETATION ENHANCED

3 NEW FARMERS IMPLEMENTING BEST MANAGEMENT PRACTICE

25 HA WEEDS MANAGED

Activities focussed on managing river erosion and improving riparian health in Bucca Bucca Creek.

ABORIGINAL COMMUNITY

8 WEED PROJECTS TO PROTECT CULTURAL HERITAGE SITES

17 CULTURAL HERITAGE SITES PROTECTED / ENHANCED

50 WEED MANAGEMENT ON CULTURAL SITES

6 TRADITIONAL OWNER-LED HEALING PROJECTS INITIATED

6 PEOPLE EMPLOYED

3 CO-MANAGEMENT ARRANGEMENTS

7 ORGANISATIONS ENGAGED ON NRM

2 EVENTS CONNECTING PEOPLE TO COUNTRY

1 KNOWLEDGE SHARING EVENT

Support was provided to the koala and Yaegl Cultural Burning projects, and the Upper Coldstream and Clybucca Wetlands projects. The Widjabul Wia-bal people were supported in Indigenous Land Use Agreement negotiations.

