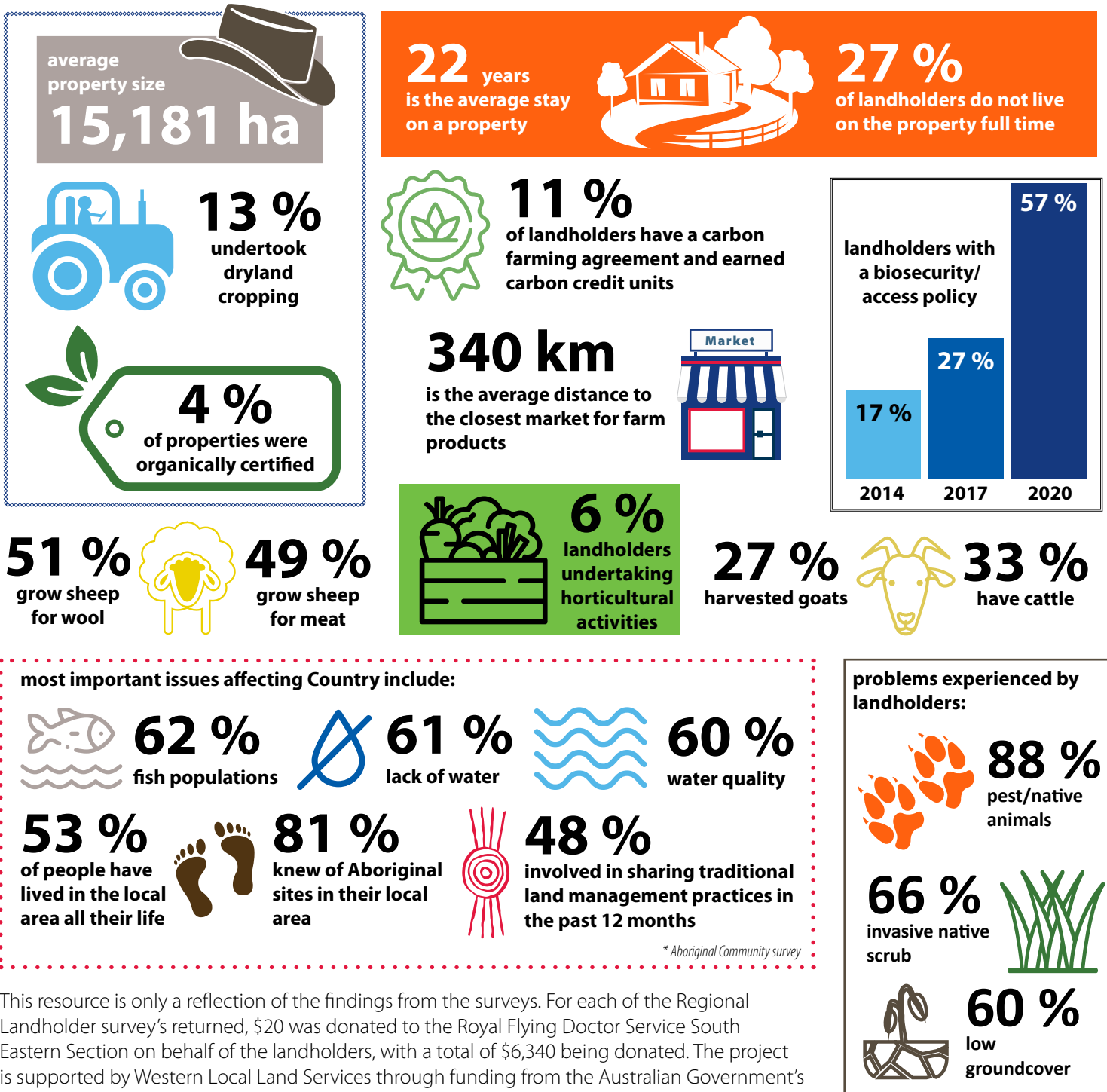


Regional Landholder and Aboriginal Community surveys

A snapshot of life in the Western region in 2020

In 2020, a year like no other due to the COVID-19 pandemic, Western Local Land Services reached out to landholders and the Aboriginal community and invited them to participate in a targeted survey to provide an insight into what the current attitudes, issues, practices and areas of opportunity are within the region.

The information gathered through the two surveys will help to inform Western Local Land Services of how the region is changing and what that means for the services provided. Similar surveys were conducted in 2014 and 2017, with the results from the three surveys to be compared to identify trends both across industries and the region.



This resource is only a reflection of the findings from the surveys. For each of the Regional Landholder survey's returned, \$20 was donated to the Royal Flying Doctor Service South Eastern Section on behalf of the landholders, with a total of \$6,340 being donated. The project is supported by Western Local Land Services through funding from the Australian Government's National Landcare Program.



Local Land Services



Australian Government

National Landcare Program



For further information on the surveys contact Local Land Services:



1300 795 299



www.lls.nsw.gov.au